

RIEV/TECH

EXCELLENT PERFORMANCE • FLEXIBLE • COMFORTABLE • MODERN



HMI PANEL RTS(P) SERIES

Human Machine Interface



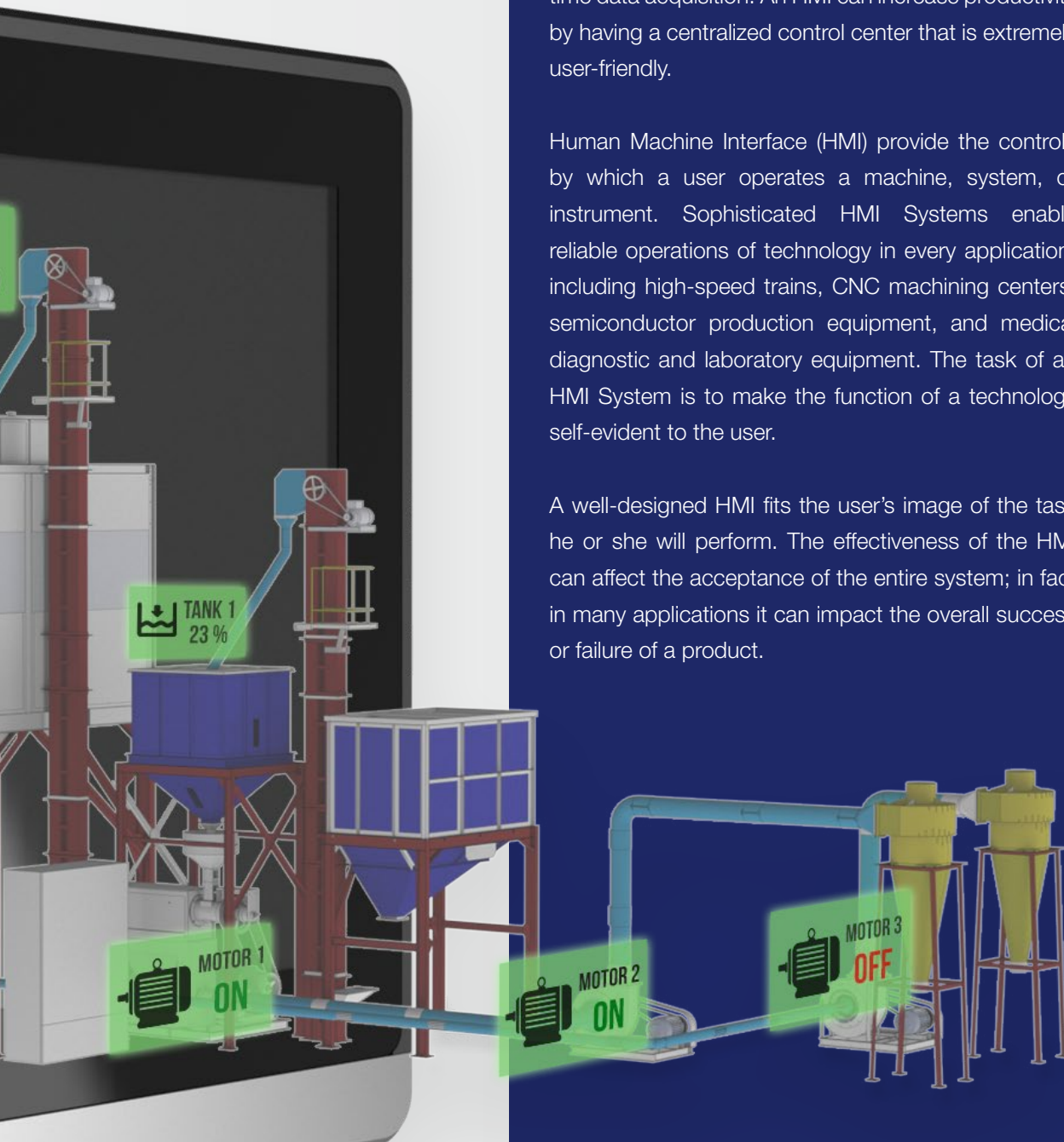
Modern, Powerful and User-Friendly
*- **RIEVTECH** is the Best choice for HMI panels.*

What is an HMI?

Human Machine Interface is an interface between the user and the machine. An HMI provides a visual representation of a control system and provides real time data acquisition. An HMI can increase productivity by having a centralized control center that is extremely user-friendly.

Human Machine Interface (HMI) provide the controls by which a user operates a machine, system, or instrument. Sophisticated HMI Systems enable reliable operations of technology in every application, including high-speed trains, CNC machining centers, semiconductor production equipment, and medical diagnostic and laboratory equipment. The task of an HMI System is to make the function of a technology self-evident to the user.

A well-designed HMI fits the user's image of the task he or she will perform. The effectiveness of the HMI can affect the acceptance of the entire system; in fact in many applications it can impact the overall success or failure of a product.



THE EFFECTIVENESS OF THE HMI CAN AFFECT THE ACCEPTANCE OF THE ENTIRE SYSTEM; IN FACT IN MANY APPLICATIONS IT CAN IMPACT THE OVERALL SUCCESS OR FAILURE OF A PRODUCT.

Applications

The Rievtech HMI is used throughout various industries including manufacturing plants, vending machines, food and beverage, pharmaceuticals, and utilities, just to name a few. HMIs along with PLCs are typically the backbone of the production line in these industries. The integration of the HMI into manufacturing has vastly improved operations. The HMI allows for supervisory control and data acquisition in the entire system, so parameter changes are feasible as the operator's choosing.

 Logistic management

 Factory automation

 Buildings

 Retail

 Healthcare

Industries

- Automotive
- Building Automation
- Education
- Food & Beverage
- Manufacturing
- Material Processing
- Medical
- Oil & Gas
- Education

- Packaging
- Power & Energy
- Printing
- Pumps
- Refrigeration
- Textile
- Water/Waste Water
- Boiler Control
- Engineering Machinery



RTS 0xx Series	Features/Size	7" (17,7 cm)	9,7" (24,6 cm)	
	<p><i>Powerful</i> <i>Colorful</i> <i>High resolution</i></p> <p>ARM A8 600 MHz</p> <p>24 Bit Color 16,777,216</p> <p>1024x600 16:9</p> <p><i>Convenient</i> <i>Networking</i> <i>Logging</i></p> <p>Multi-Touch Drag, Swipe, Rotate, Zoom</p> <p>Ethernet + 4x COM Ports</p> <p>SD Card Slot For storage and collection</p>	<p>RTS 007</p>  <p>16:9 IPS 1024x600</p>	<p>RTS 010</p>  <p>4:3 IPS 1024x768</p>	
RTS 40xxCE/E Series	Features/Size	7" (17,7 cm)	9,7" (24,6 cm)	
	<p><i>Powerful</i> <i>Colorful</i></p> <p>ARM A8 600 MHz</p> <p>24 Bit Color* 16,777,216</p> <p><i>Networking</i> <i>Logging</i></p> <p>Ethernet + 4x (2x) COM Ports</p> <p>SD Card Slot For storage and collection</p>	<p>RTS 4070CE</p>  <p>16:9 800x480 24-Bit</p>	<p>RTS 4097iE</p>  <p>4:3 1024x768 16-Bit</p>	
RTS 40xxC Series	Features/Size	4,3" (10,9 cm)	7" (17,7 cm)	9,7" (24,6 cm)
	<p><i>Powerful</i> <i>Colorful</i></p> <p>ARM A8 600 MHz</p> <p>24 Bit Color* 16,777,216</p> <p><i>Networking</i></p> <p>2-Channel Serial Communication</p>	<p>RTS 4043C</p>  <p>16:9 480x272 24-Bit</p>	<p>RTS 4070C</p>  <p>16:9 800x480 24-Bit</p>	<p>RTS 4097C</p>  <p>4:3 1024x768 16-Bit</p>
RTP 10xx Series	Features/Size	4,3" (10,9 cm)		
	<p><i>RTC</i> <i>Easy Download</i></p> <p>Real Time Clock Time & Date</p> <p>USB Host For Programming</p> <p><i>Networking</i></p> <p>2-Channel Serial Communication</p>	<p>RTP 1043</p>  <p>STN 192x64 Mono</p>		

* - Except 9,7" Models (16-bit Color)

High Brightness

RIEV/TECH

High brightness IPS panel with minimizing reflection



VS

Conventional HMI Panel



High brightness models minimizing reflection to the features from a larger sized model provide high visibility even in well-lit locations.

Colorful

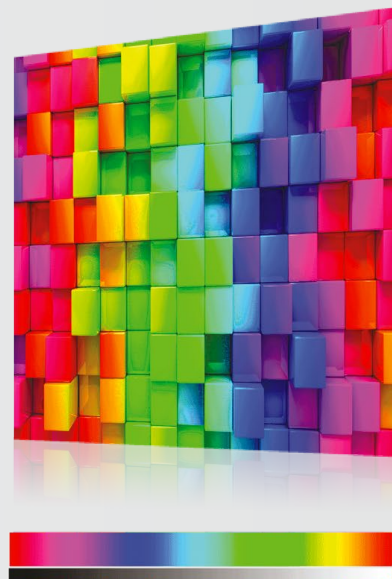
RIEV/TECH

24-Bit panel displays 16.7 million colors



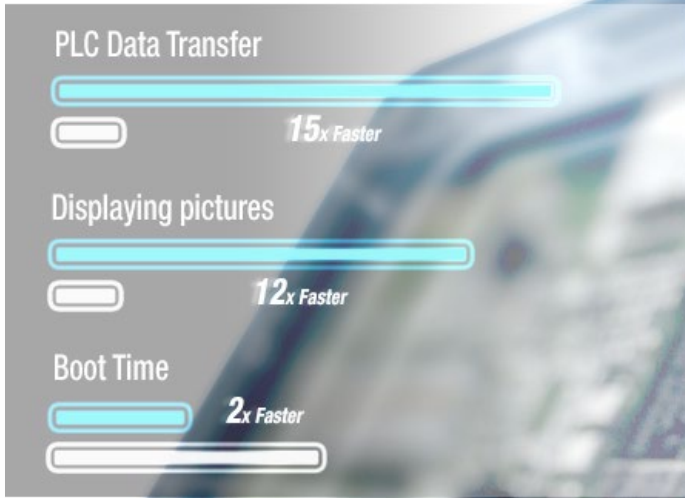
VS

Conventional HMI Panel
8-Bit - 256 colors



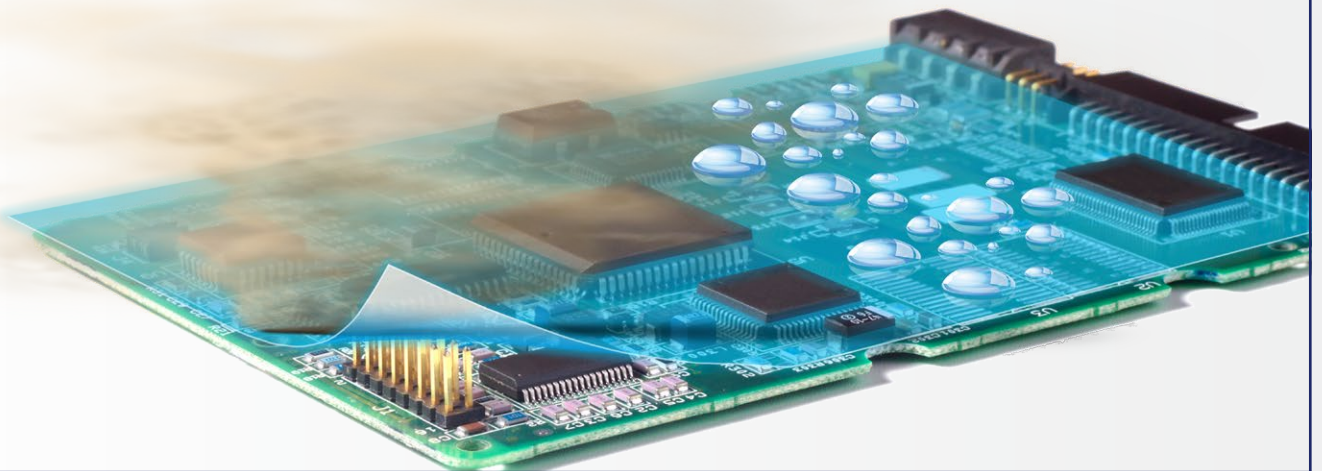
Wider color range that enables accurate, detailed, and natural-looking images.

Powerful CPU



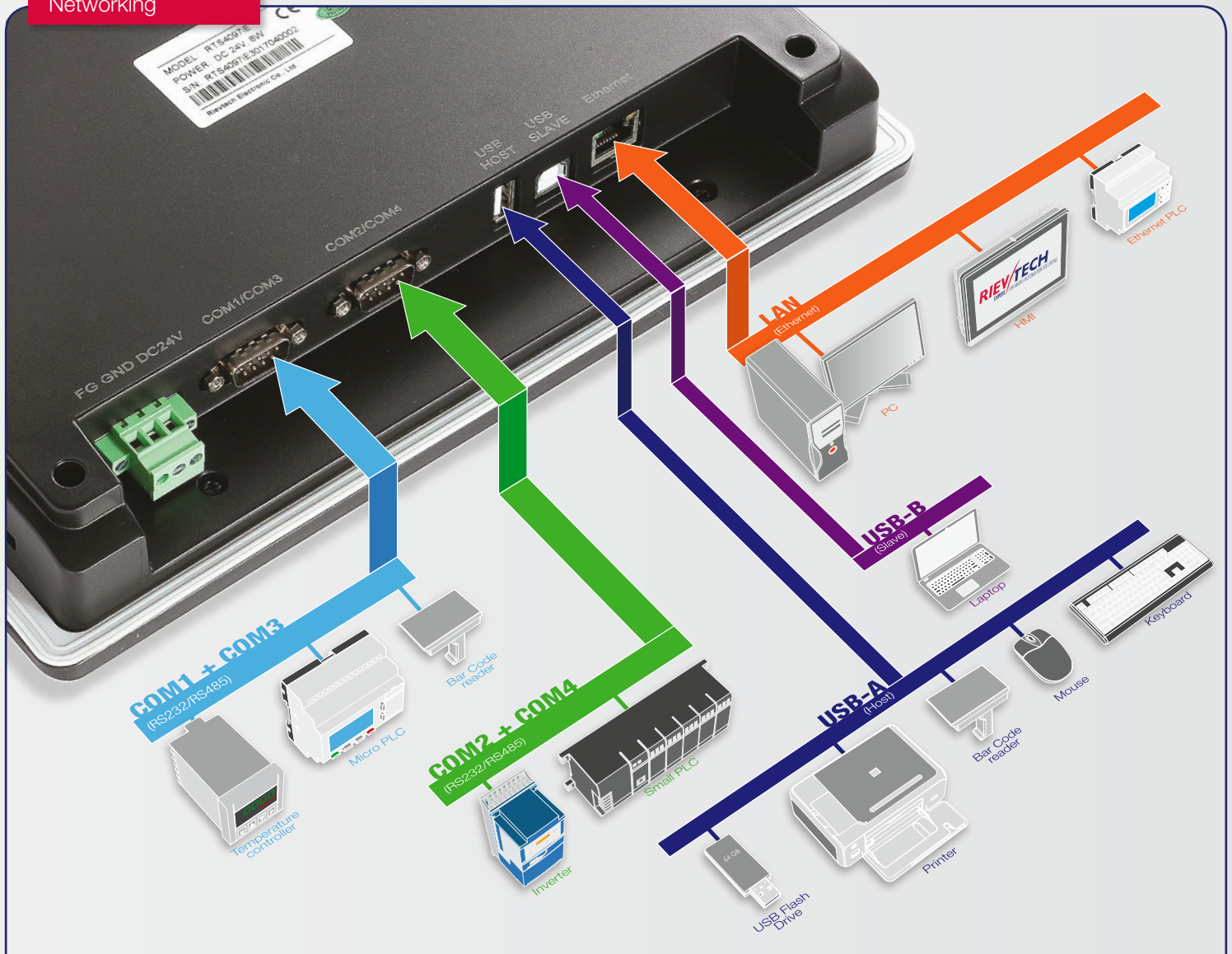
High speed and easy flow, supporting animation formats. With 600MHz CPU, more efficient operation is reliable, such as 12 times speed of displaying JPEG, 15 times speed of reading&writing PLC data, shortest boot time, and highest switching speed.

PCB Coating Protection



Coating is applied to surfaces of all interior printed circuit boards. This additional layer of defense guards against dust, condensation and corrosion - ensuring maximum longevity.

Networking



COMMUNICABLE SIMULTANEOUSLY WITH **PLC, BARCODE READER, VFD, TEMPERATURE CONTROLLER**

The Rievtech HMI is able to communicate with many different types of hardware using high-speed RS232/422/485 communication ports and Ethernet 10 Base T/100 Base-TX communications. In addition, the HMI features a USB port for fast downloads of configuration files and access to trending and data logging.

MULTI-TOUCH SERIES



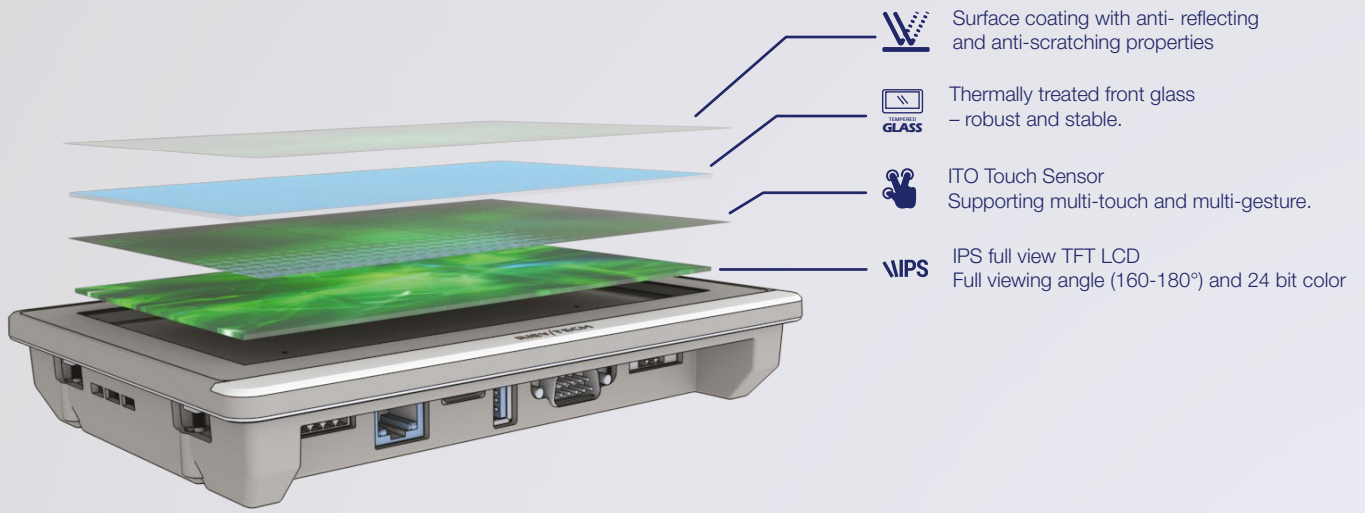


RTS007 and RTS010

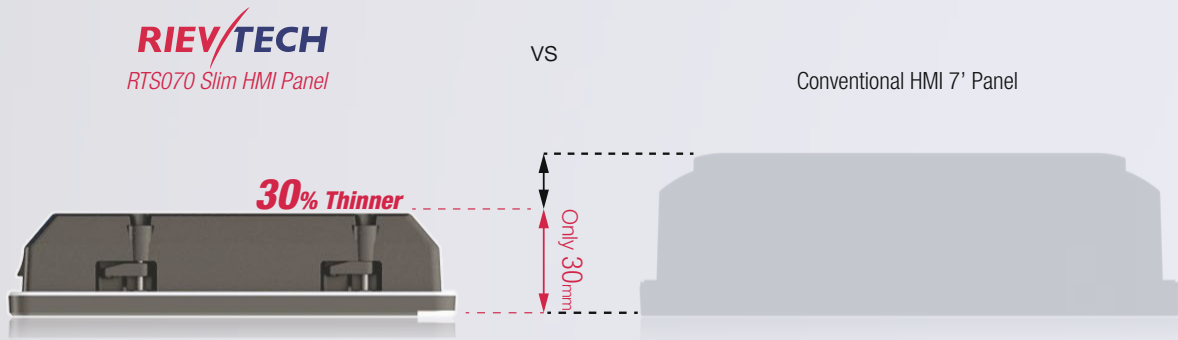
Rievtech's line of multi-touch HMIs go beyond that of the standard industrial HMI panels with elegant and edge-to-edge designs, rugged construction, powerful performance, and flexible communication options.

Supporting multi-touch and multi-gesture, specific page effect can be realized. multi-zooming makes the pictures and technical data presented as your favorite.

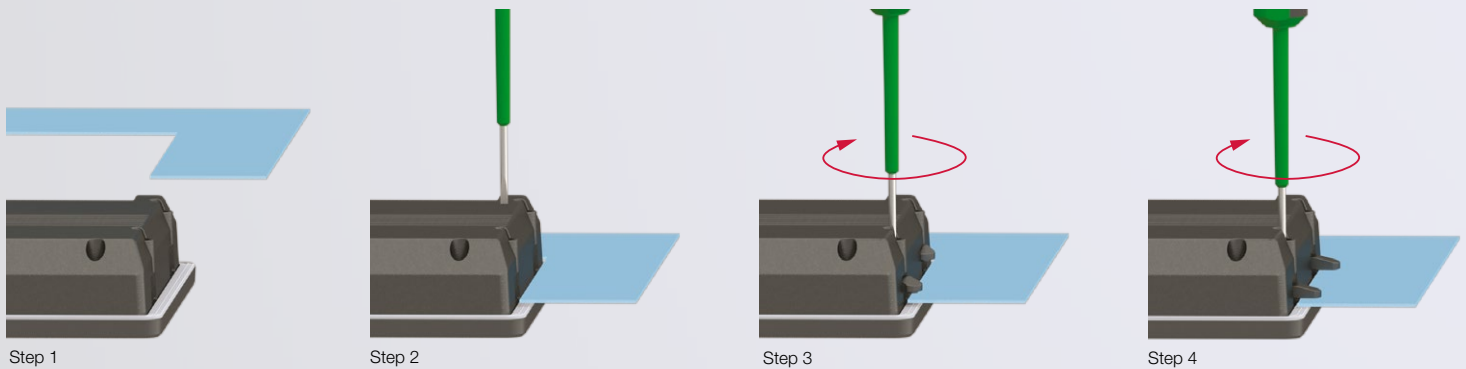
Multi-Touch HMI | **Capacitive Multi-Touch Panel**



Multi-Touch HMI | **The Thinnest Industrial HMI. Modern and High-Quality Design.**



Multi-Touch HMI | **Quick and Easy Panel Mounting**



The panel mount HMI is installed from the front into a cutout in the front panel. Our design type features extreme robustness and is particularly suitable for quick installation into control panels or consoles.

Multi-Touch HMI | Control and Monitor Remotely

Use your PC, laptop, tablet PC or smartphone as 2nd panel to display and control your application remote.



Any handheld mobile device running a VNC client application can remotely control an Multi-Touch HMI. The HMI must have the VNC server function enabled and be accessible over an Ethernet network. The mobile device must be running a VNC client application and have access to the HMI on the network.

To connect to the HMI from a smart phone or mobile device over the internet, you will need a static IP address in the HMI, accessible over the internet. It may be necessary to open a port on the local area network to allow access to the HMI. Accessing an HMI over the network may require network administrative assistance.

ECONOMIC TOUCH SERIES

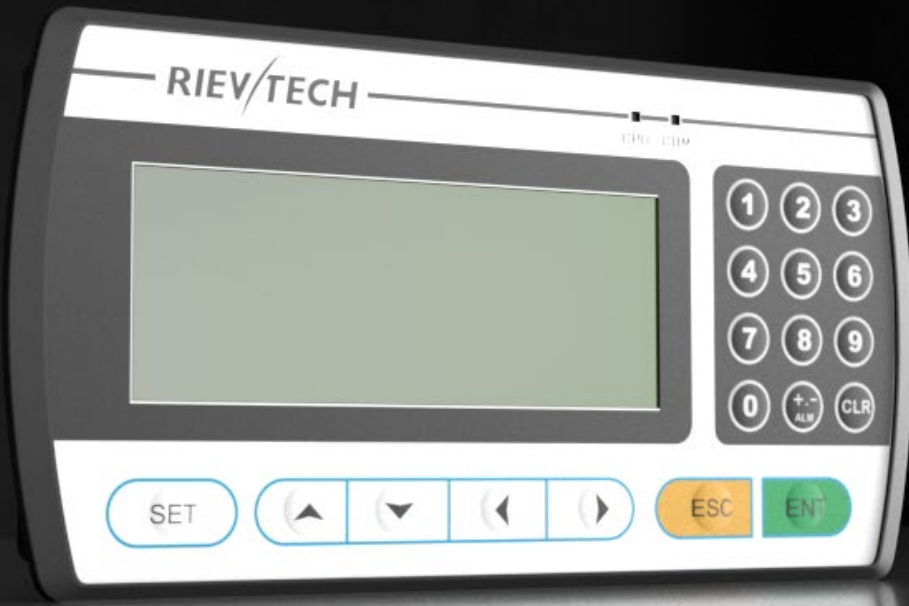


RTS4070CE, RTS4097iE, RTS4043C, RTS4070C and RTS4097C

Inspired by consumer-oriented products Rievtech HMIs are facing new challenges. They are becoming more than just a functional add-on. Human machine interfaces as integral part of the user experience have to be user-friendly, intuitive and flexible interfaces offering at the same time state-of-the-art look and feel.



TEXT PANEL

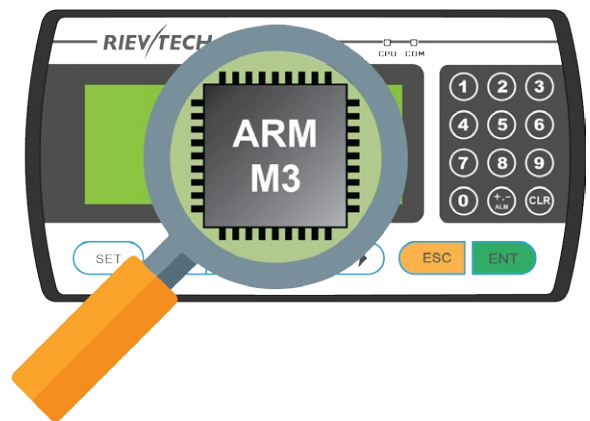


High-Speed USB



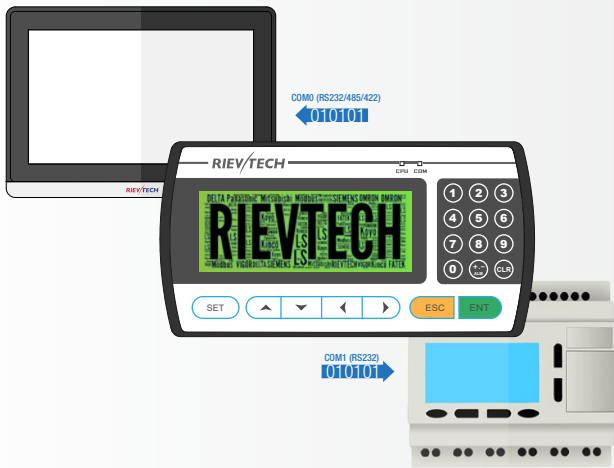
Wrapped with high-speed USB interface to download the configuration to facilitate debugging, upgrading and quantity production.

CPU



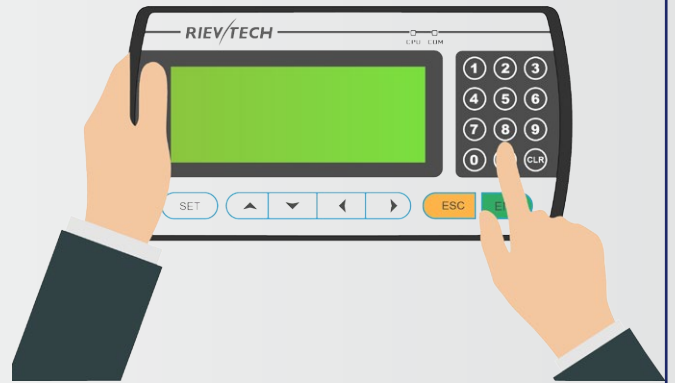
Using ARM CORTEX-M3 32-bit RISC processor - high-speed and smooth.

Communication



Double communication ports, supporting simultaneous connection of different PLC or controller, fast communication.

Buttons



Metal dome film buttons, long lifespan - several millions of touch operation.

Software



- Easy programming
- Supporting offline simulation for easy and convenient testing.
- Supporting vector fonts and several different font sizes on a single screen. RTP1043 uses TrueType fonts, allowing you use of many of the fonts on your PC, including - International characters, font formatting (bold, italic, underline), font sizing.
- Represent important data with easily interpreted bar graphs. Combine with bitmaps to meet the needs of the individual application.
- PLC support for most major-brand PLCs, and controllers including Mitsubishi, Omron, Delta, Siemens (MPI support, direct communication with Siemens S7-300 without adapters), Koyo, Modbus and of course **Rievtech**.

Rievtech Studio

configuration software



Rievtech Studio

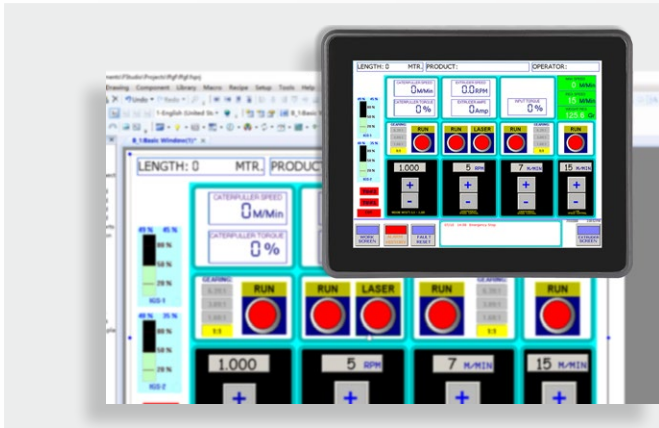
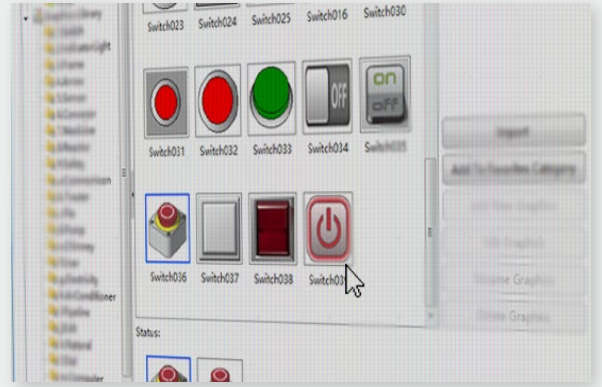
Rievtech Studio is used to create projects that can display information from a PLC, process status, or can be used to input data with virtual switches or keypads to make changes to a process.

Each screen can be designed and built in minutes using 'drag and drop' graphical objects found in the application library.

Built-in Serial and Networking Protocols, this will allow Rievtech HMI to locally or remotely communicate with Rievtech or other major brand PLC manufacturers.

Built-in Library

Picture Library provides rich picture library. It includes many popular image categories widely used for industrial application development.

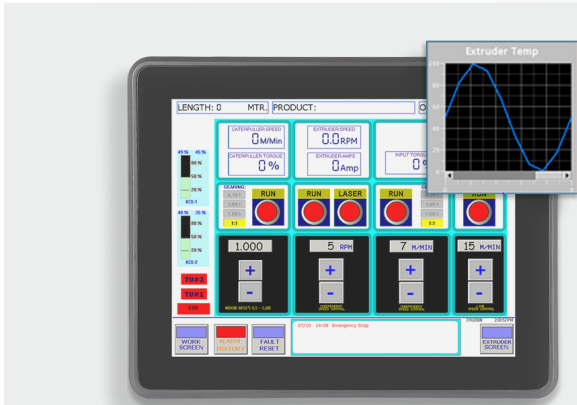
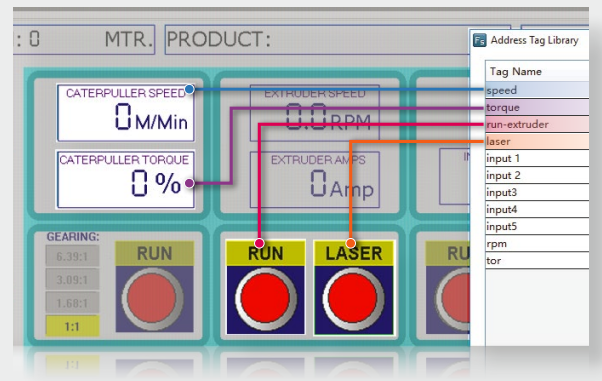


Offline Simulator

It is to test HMI project offline on PC without connecting with PLC.

Address Tag Library

The "Address Tag Library" saves the addresses in the tag form. This makes it easy to use and modify the address for the user. You can add, delete, import and export your tags.



Pop-Up Windows

They are triggered by alarms (bit or word value) with messages for the operator or display more information about process working area whenever the space of main screen is unavailable.



External Monitoring and Control

A Rievtech HMI (some models) can be monitored and controlled remotely with a PC, smartphone or tablet. The screen currently shown in the Panel can be viewed from the user's remote device. Remote monitoring allows organizations to monitor and control operations in real time, regardless of where process operations are occurring. VNC capabilities give operators full control over a remote HMI or simply provide view-only access for process monitoring.

Data Exchange as Gateway

It is possible to exchange data from different PLCs via different ports of HMI simultaneously. Tools in HMI software are able to copy data from COM ports, Ethernet, internal memory, or vice versa.

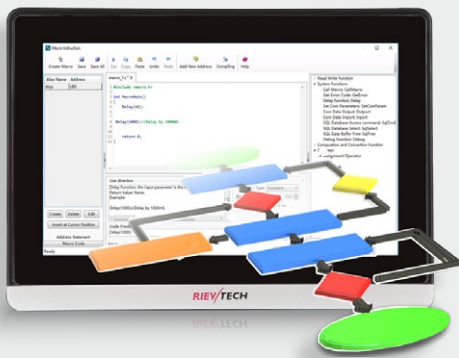
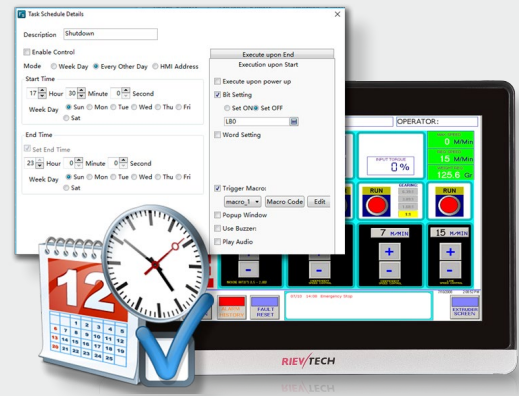


Data Logging

It offers a cyclic logging that is repeated depending on the time and device state and a conditional logging which works under the device conditions. Magnificent of Trend Graph Scale – The time scale of trend graph can be magnified and the display can be scrolled by touch and drag.

Task Schedule

Task schedule assigns an operation to be executed on a set time. Available functions include Bit ON/OFF, setting Word values, macro trigger, popup window and play audio file.



Macros

It is difficult to perform drawing using only the provided object functions, and it can be supplemented using a macro. The macro using complicated arithmetic operations and various functions is executed to greatly reduce the load upon external controllers. A wide range of scripts including initial macro, screen macro and object macro can be used depending on the usage.

Recipe

Recipe refers to a group of data saved in a continuous registers of the HMI device. Recipe data are saved in a non-volatile memory the Panel. Thus, when the power is out, the data saved at the last minute are kept.



Protocols Supported Include

RIEVTECH	Envicool	Hitachi	KEYENCE	Modbus Compatible	Saia	VIPA
ABB	FATEK	HOLLYSYS	Kinco	MYITER	Schneider	VMMORE
Acrel	FLEXEM	HUST	Koyo	OMRON	SIEMENS	Wellthinker
Action Technology	GE	IDEC	LS	ONI	TCL	Yaskawa
Allen-Bradley	GPS	Inovance	MEGMEET	Panasonic	TENDZONE	Yokogawa
ANCHORWILL	GINWAVE	Invt	Metronix	Parker	THINGET	
BACNET	Crouzet	JINZHIDA	MIKOM	RKC	Tjck	
DELTA	Haiwell	KCLY	Mitsubishi	RS Automation	TRIO	
Delian	HCFA	KEWEI	MOCHUAN	Runpower	VIGOR	

Multi-Language

In response to enterprise environment of global era, up to 32 languages can be simultaneously converted and users can select a language depending on his/her nationality.



Able to View PDF

Saving trouble shooting instructions for failures (alarm) in PDF format so that users could see in the field.

Graphics Objects

Basic

Straight Line		Fold Line		Rectangle		Polygon		Ellipse	
Arc		Sector		Sector Ring		Table		Static Picture	
Static Text	Abc	Drop-down List		Numeric Value Display/Input		Character Display/Input		Switch (Bit, Word, Key)	
Indicator Light (Bit, Word, Mode ...)		Check list		Selection boxes					

Enhanced

Bar Chart		Sector Chart		Meter		Trend Curve		XY Chart	
Disk and Curve		Slider		Scale		Moving Component		Canvas	
Pipeline		PDF Document							

MULTI-TOUCH CAPACITIVE HMI

RTS007

7 inch (17,7 cm)



Picture Quality

Resolution - **1024 x 600**
Color - **16 millions** (24-Bit)
Brightness - **450cd/m2**
View - **160°**

Touch Panel

Type - **Capacitive**
Multi-Touch, Multi-Gesture,
Anti-Scratching, Glass+

Features

CPU - **ARM Cortex A8** (600MHz)
Memory - **128MB** (Flash) + **128MB** (RAM)
SD Slot : **Yes**

Connectivity

Serial - **COM1-COM4** (RS232/RS422/RS485)
Ethernet - **10/100 Mbit**
USB : **Host** (USB A) + **Slave** (USB B)

Protection

Power - **Thunderstrike, Surging**
COM Ports - **Isolated**
PCB : **Spray Coating** (Anti-Dust, -Condensation,
-Corrosion)

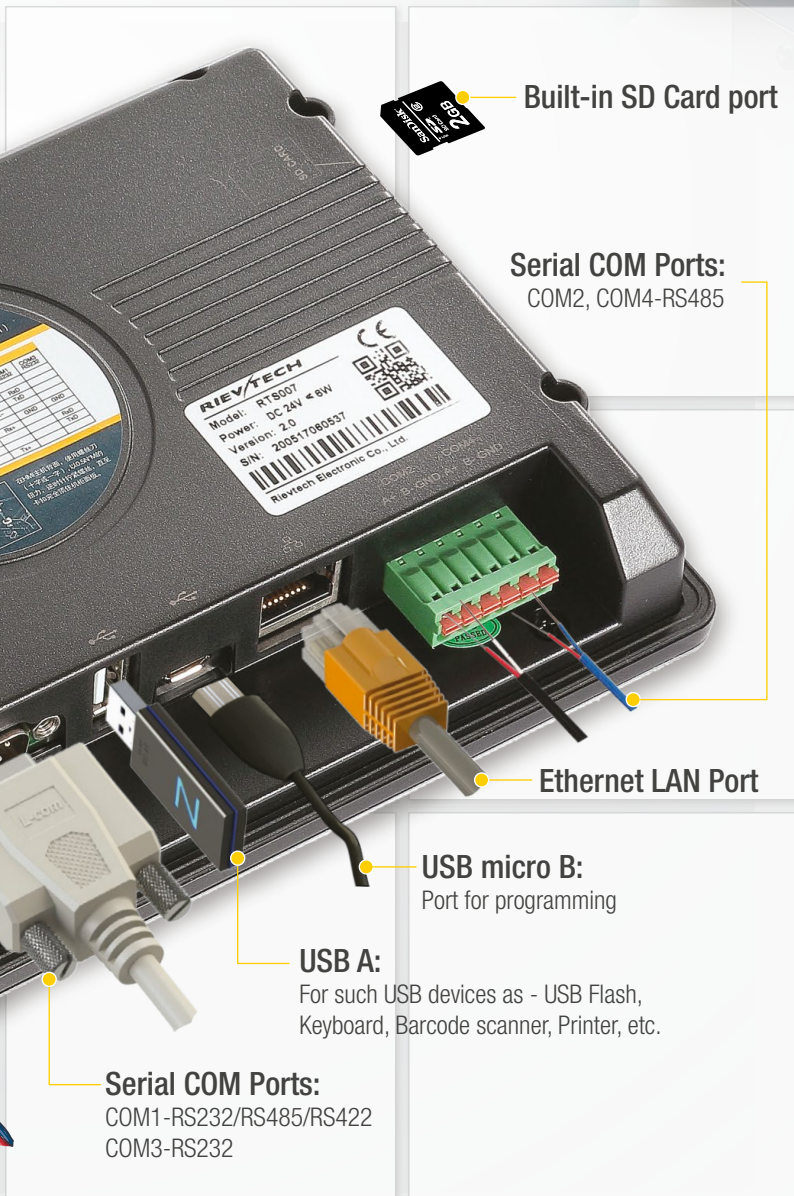


Power Supply - 24V DC

MULTI-TOUCH CAPACITIVE HMI

RTS010

9,7 inch (24,6 cm)



Built-in SD Card port

Serial COM Ports:
COM2, COM4-RS485

Ethernet LAN Port

USB micro B:
Port for programming

USB A:
For such USB devices as - USB Flash,
Keyboard, Barcode scanner, Printer, etc.

Serial COM Ports:
COM1-RS232/RS485/RS422
COM3-RS232

Picture Quality

Resolution - **1024 x 768**
Color - **16 millions** (24-Bit)
Brightness - **350cd/m2**
View - **180°**

Touch Panel

Type - **Capacitive**
Multi-Touch, Multi-Gesture,
Anti-Scratching, Glass+

Features

CPU - **ARM Cortex A8** (600MHz)
Memory - **128MB** (Flash) + **128MB** (RAM)
SD Slot : **Yes**

Connectivity

Serial - **COM1-COM4** (RS232/RS422/RS485)
Ethernet - **10/100 Mbit**
USB : **Host** (USB A) + **Slave** (USB B)

Protection

Power - **Thunderstrike, Surging**
COM Ports - **Isolated**
PCB : **Spray Coating** (Anti-Dust, -Condensation,
-Corrosion)

ECONOMIC TOUCH HMI

RTS4070CE

7 inch (17,7 cm)



Picture Quality

Resolution - **800 x 480**
Color - **16 millions** (24-Bit)
Brightness - **360cd/m2**
View - **160°**

Touch Panel

Type - **4-wires Resistive**

Features

CPU - **ARM Cortex A8** (600MHz)
Memory - **128MB** (Flash) + **128MB** (RAM)
SD Slot : **Yes**

Connectivity

Serial - **COM1 - COM4** (RS232/RS422/RS485)
Ethernet - **10/100 Mbit**
USB : **Host** (USB A) + **Slave** (USB B)

Protection

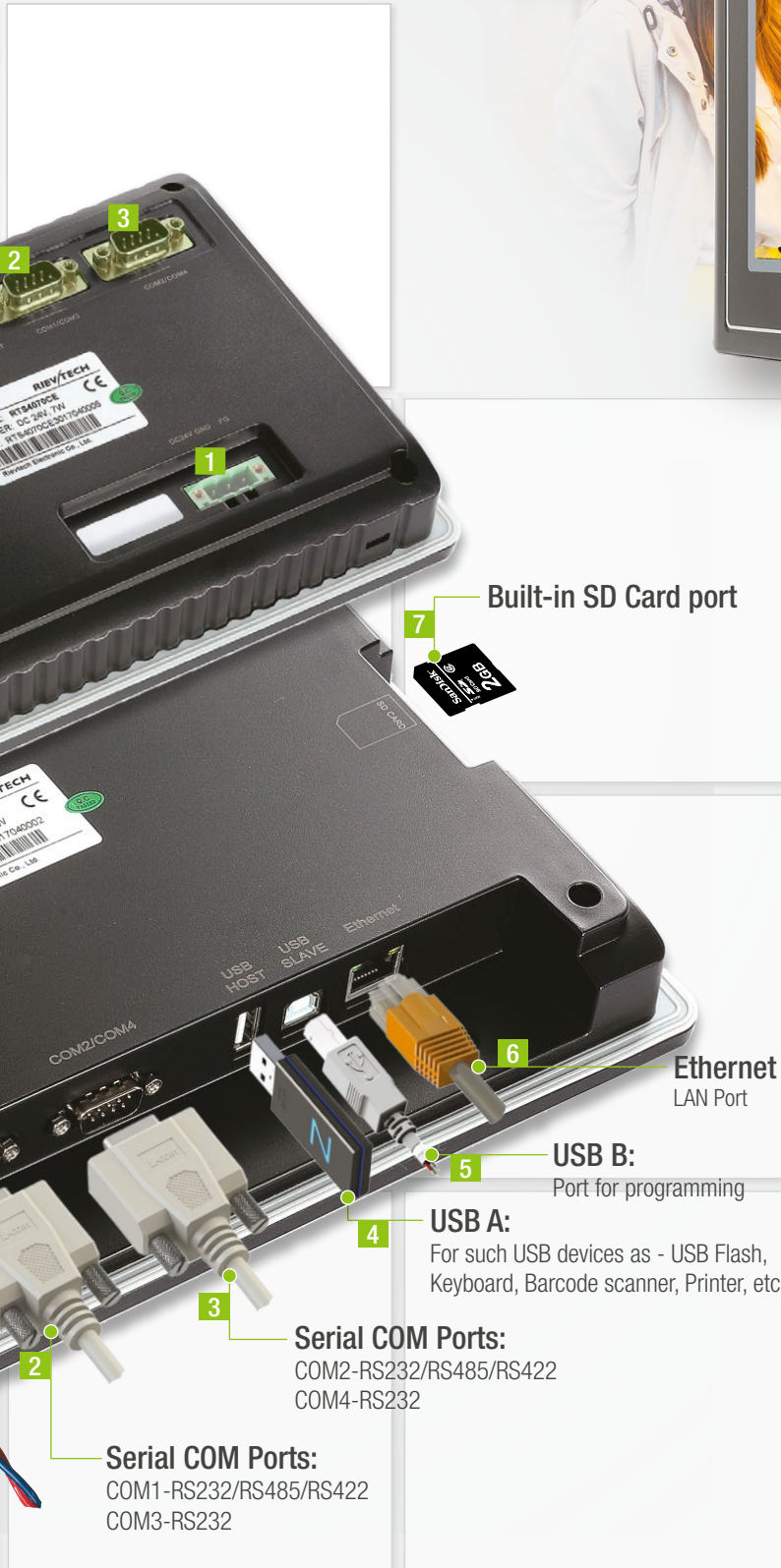
Power - **Isolated, Thunderstrike, Surging**
COM Ports - **Isolated**
PCB : **Spray Coating** (Anti-Dust, -Condensation, -Corrosion)



ECONOMIC TOUCH HMI

RTS4097iE

9,7 inch (24,6 cm)



Built-in SD Card port

Ethernet LAN Port

USB B:
Port for programming

USB A:
For such USB devices as - USB Flash, Keyboard, Barcode scanner, Printer, etc.

Serial COM Ports:
COM2-RS232/RS485/RS422
COM4-RS232

Serial COM Ports:
COM1-RS232/RS485/RS422
COM3-RS232

Picture Quality

Resolution - **1024 x 768**
Color - **65 536 (16-Bit)**
Brightness - **350cd/m2**
View - **180°**

Touch Panel

Type - **4-wires Resistive**

Features

CPU - **ARM Cortex A8 (600MHz)**
Memory - **128MB (Flash) + 128MB (RAM)**
SD Slot : **Yes**

Connectivity

Serial - **COM1-COM4 (RS232/RS422/RS485)**
Ethernet - **10/100 Mbit**
USB : **Host (USB A) + Slave (USB B)**

Protection

Power - **Isolated, Thunderstrike, Surging**
COM Ports - **Isolated**
PCB : **Spray Coating (Anti-Dust, -Condensation, -Corrosion)**

ECONOMIC TOUCH HMI RTS4043C

4,3 inch (10,9 cm)



Picture Quality

Resolution - **480 x 272**
Color - **16 millions** (24-Bit)
Brightness - **420cd/m²**
View - **160°**

Touch Panel

Type - **4-wires Resistive**

Features

CPU - **ARM Cortex A8** (600MHz)
Memory - **128MB** (Flash) + **128MB** (RAM)
SD Slot : **N/A**

Connectivity

Serial - **COM1, COM3** (RS232/RS422/RS485)
Ethernet - **N/A**
USB : **Host** (USB A) + **Slave** (USB B)

Protection

Power - **Thunderstrike, Surging**
COM Ports - **Isolated**
PCB : **Spray Coating** (Anti-Dust, -Condensation, -Corrosion)

USB A:
For such USB devices as -
USB Flash, Keyboard,
Barcode scanner, Printer, etc.

USB B:
Port for programming



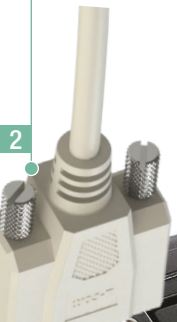
ECONOMIC TOUCH HMI

RTS4070C

7 inch (17,7 cm)



Serial COM Ports:
COM1-RS232/RS485/RS422
COM3-RS232



2

Power Supply - 24V DC

1



Picture Quality

Resolution - **800 x 480**
Color - **16 millions (24-Bit)**
Brightness - **360cd/m2**
View - **160°**

Touch Panel

Type - **4-wires Resistive**

Features

CPU - **ARM Cortex A8 (600MHz)**
Memory - **128MB (Flash) + 128MB (RAM)**
SD Slot : **N/A**

Connectivity

Serial - **COM1, COM3 (RS232/RS422/RS485)**
Ethernet - **N/A**
USB : **Host (USB A) + Slave (USB B)**

Protection

Power - **Thunderstrike, Surging**
COM Ports - **Isolated**
PCB : **Spray Coating (Anti-Dust, -Condensation, -Corrosion)**



ECONOMIC TOUCH HMI RTS4097C

9,7 inch (24,6 cm)



Picture Quality

Resolution - **1024 x 768**

Color - **65 536** (16-Bit)

Brightness - **350cd/m2**

View - **180°**

Touch Panel

Type - **4-wires Resistive**

Features

CPU - **ARM Cortex A8** (600MHz)

Memory - **128MB** (Flash) + **128MB** (RAM)

SD Slot : **N/A**

Connectivity

Serial - **COM1, COM3** (RS232/RS422/RS485)

Ethernet - **N/A**

USB : **Host** (USB A) + **Slave** (USB B)

Protection

Power - **Thunderstrike, Surging**

COM Ports - **Isolated**

PCB : **Spray Coating** (Anti-Dust,

-Condensation, -Corrosion)



TEXT MONOCHROME HMI RTP1043

4,3 inch (10,9 cm)



Picture Quality

Resolution - **192 x 64**
 Color - **1 (Mono)**
 Brightness - **60 cd/m2**
 View - **120°**

Touch Panel

Type - **N/A**

Features

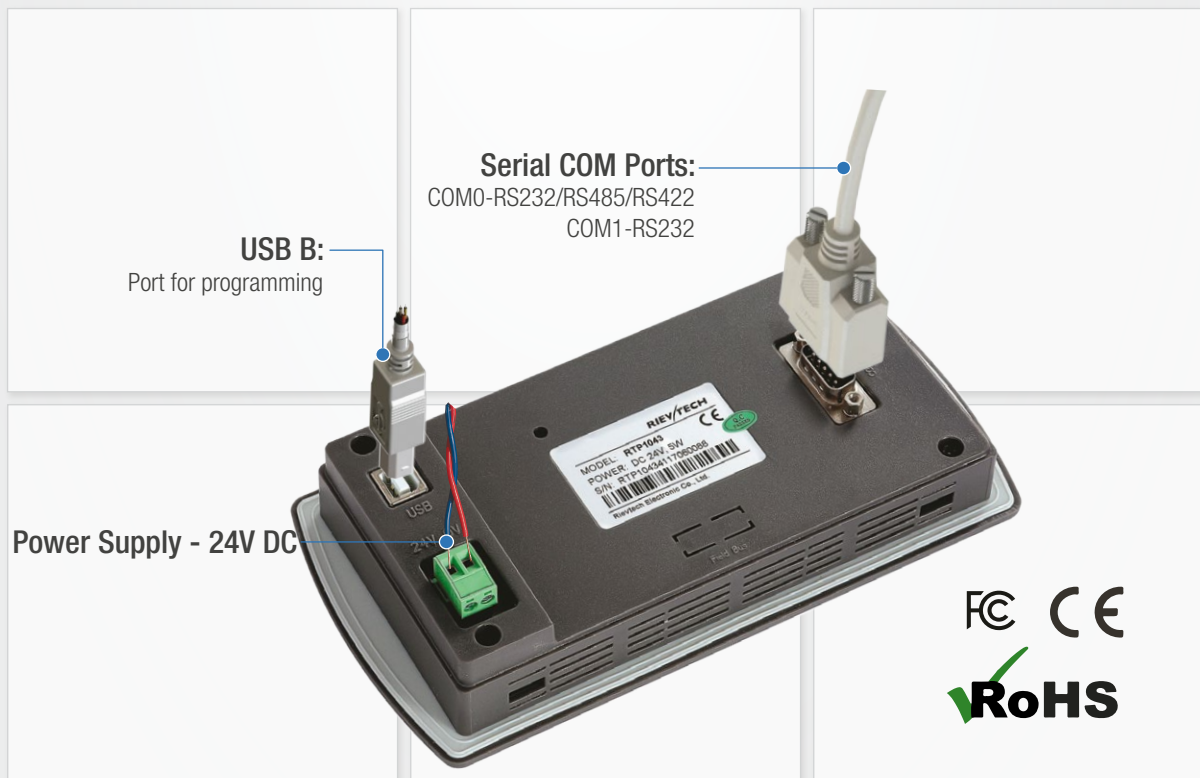
CPU - **ARM Cortex M3** (72MHz)
 Memory - **256kB** (Flash)
 SD Slot : **N/A**

Connectivity

Serial - **COM0, COM1** (RS232/RS422/RS485)
 Ethernet - **N/A**
 USB : **Slave** (USB B)

Protection

Power - **Thunderstrike, Surging**
 COM Ports - **N/A**
 PCB : **Spray Coating** (Anti-Dust,
 -Condensation, -Corrosion)



7"
9.7"



RTS 0xx Series

Model: RTS070

Model: RTS010

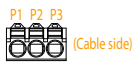
Specifications

Item	RTS007	RTS010
Display type	TFT color LCD IPS	
Screen size	7 inch (17.7cm)	9,7 inch (24.6cm)
Display Resolution	1024x600 pixel (WSVGA)	1024x768 pixel (XGA)
Color indication	24-bit Color (16.2M)	
Indication degree	160 deg.	180 deg.
Backlight	LED Type	
Backlight duration	50,000 hours	
Brightness	450 cd/m ²	350 cd/m ²
Touch panel	Glass+ Glass projective Multi-Touch Capacitive	
CPU	600MHz ARM Cortex A8	
Flash Memory	128MB	
Operation RAM	128MB	
RTC Function	Built-in	
Ethernet	1 channel, 10/100BASE-TX	
SD Card Slot	SD/SDHC	
USB Host	1 channel, USB 2.0 host (mouse, keyboard, printer, barcode reader and USB memory driver is available)	
USB Client	1 channel, USB 2.0 slave (for download and upload project file)	
RS-232C	1 channel - COM3	
RS-485	2 channel - COM2/COM4	
RS-232/422/485	1 channel, 232/422/485 Combination	
COM Port Isolation	Yes	
Input Power	DC24V, working range DC 9V~28V	
Power Isolation	-	
Power Consumption	< 6W	
Power Down Allowed	< 5ms	
Power Protection	Protected from thunder strike and surging	
Multi-language	Up to 32 language simultaneously	
Animation	GIF format is available	
Recipe	Available	
Data logging	Available	
Macro executor	Available	
Download project	U-Disk/USB Device/Ethernet	

Item	RTS007	RTS010
Certificate		
CE & RoHS	CE: Complied with EN61000-6-2:2005, EN61000-6-4:2007 RoHS: Surge Immunity:±1KV, EFT:±2KV; ESD:4KV, Air:8KV	
Operating Temperature	-10 °C .. +60 °C	
Storage Temperature	-20 °C .. +70 °C	
Operating Humidity	10~90%RH (No condensate)	
Vibration Endurance	10~25Hz (X, Y, Z direction 2G/30 minutes)	
Degree of Protection	Front IP65 (with NEMA panel), Back IP20	
Cooling Method	Natural air circulation	
Enclosure	ABS+PC	
PCB Coating	Yes	
Mount	Panel mount - "Quick Lock"	
Panel Cutout	178x 125 mm	230 x 180 mm
External Dimensions	185.1 x 131.1 x 30 mm	247 x 197 x 31.5 mm
Weight	Approx. 750g (unit only)	Approx. 1240g (unit only)

[Power connector]

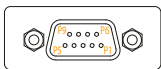
Pin Connection



Pin No.	Name
P1	FG
P2	0V
P3	+24V

[COM1/COM3 connector]

Pin Connection

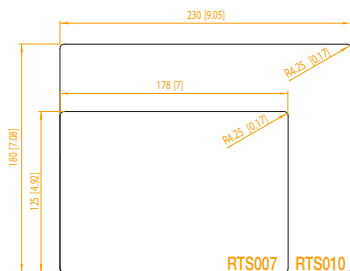


D-Sub 9-pin (Unit side)

Pin No.	Name
P1	Rx-(B)
P2	RxD_PLC (COM1 RS232)
P3	TxD_PLC (COM1 RS232)
P4	Tx+
P5	GND
P6	Rx+(A)
P7	RxD_PC/PLC (COM3 RS232)
P8	TxD_PC/PLC (COM3 RS232)
P9	Tx+

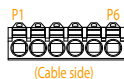
[Panel Cut-Out]

Unit: mm [in.]



[COM2/COM4 connector]

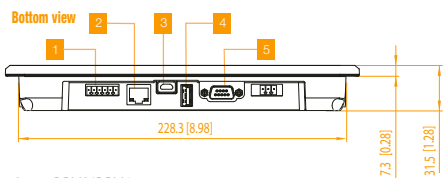
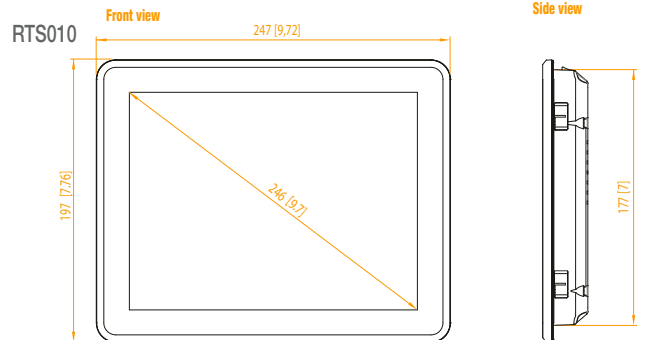
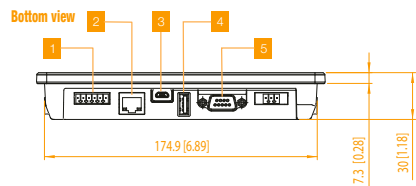
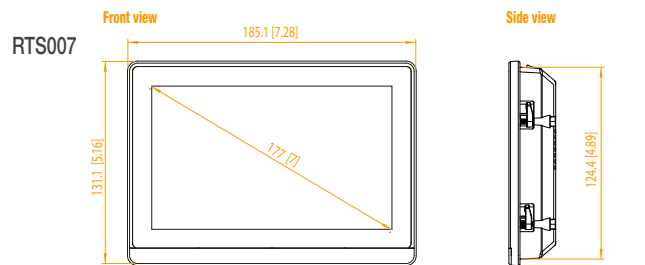
Pin Connection



Pin No.	Name
P1	A+ (COM2)
P2	B- (COM2)
P3	GND
P4	A+ (COM4)
P5	B- (COM4)
P6	GND

[External Dimensions/Interfaces]

Unit: mm [in.]



- 1 Serial Interface - COM2/COM4
- 2 Ethernet Interface
- 3 USB Slave (Type mini B)
- 4 USB Host (Type A)
- 5 Serial Interface - COM1/COM3 (D-sub 9-pin)

7"
9.7"



RTS 40xxCE/iE Series

Model: RTS4070CE

Model: RTS4097iE

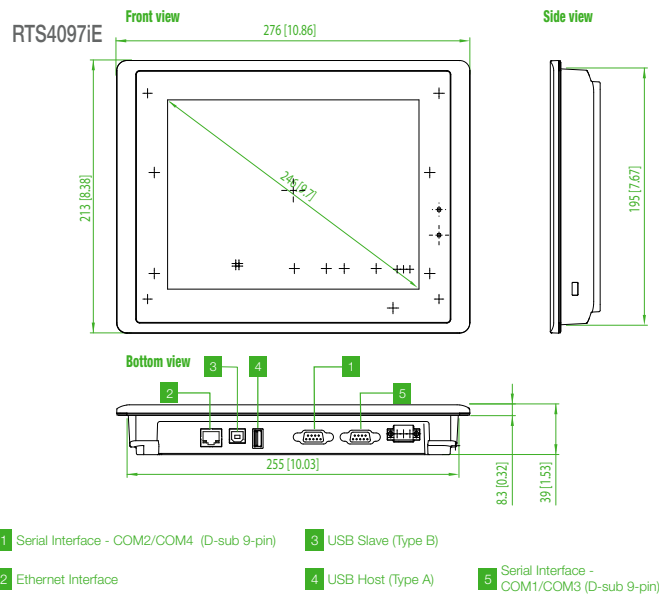
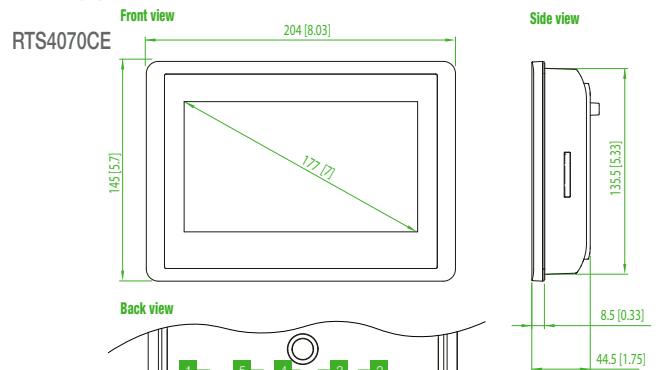
Specifications

Item	RTS4070CE	RTS4097iE
Display type	TFT color LCD IPS	
Screen size	7 inch (17.7cm)	9,7 inch (24.6cm)
Display Resolution	800x480 pixel (WVGA)	1024x768 pixel (XGA)
Color indication	24-bit Color (16.2M)	16-bit Color (65 536)
Indication degree	160 deg.	180 deg.
Backlight	LED Type	
Backlight duration	50,000 hours	
Brightness	360 cd/m ²	350 cd/m ²
Touch panel	4 wires resistive touch screen (Surface hardness 4H)	
CPU	600MHz ARM Cortex A8	
Flash Memory	128MB	
Operation RAM	128MB	
RTC Function	Built-in	
Ethernet	1 channel, 10/100BASE-TX	
SD Card Slot	SD/SDHC	
USB Host	1 channel, USB 2.0 host (mouse, keyboard, printer, barcode reader and USB memory driver is available)	
USB Client	1 channel, USB 2.0 slave (for download and upload project file)	
RS-232C	1 channel - COM3	2 channels - COM3, COM4
RS-485	-	
RS-232/422/485	1 channel, 232/422/485 Combination	
COM Port Isolation	Yes	
Input Power	DC24V, input range DC 9V~28V	DC24V, input range DC 18V~28V
Power Isolation	Yes	
Power Consumption	< 10W	
Power Down Allowed	< 5ms	
Power Protection	Protected from thunder strike and surging	
Multi-language	Up to 32 language simultaneously	
Animation	GIF format is available	
Recipe	Available	
Data logging	Available	
Macro executor	Available	
Download project	U-Disk/USB Device/Ethernet	

Item	RTS4070CE	RTS4097iE
Certificate		
CE & RoHS	CE: Complied with EN61000-6-2:2005, EN61000-6-4:2007 RoHS: Surge Immunity:±1KV, EFT:±2KV; ESD:4KV, Air:8KV	
Operating Temperature	0 °C .. +50 °C	
Storage Temperature	-20 °C .. +60 °C	
Operating Humidity	10~90%RH (No condensate)	
Vibration Endurance	10~25Hz (X, Y, Z direction 2G/30 minutes)	
Degree of Protection	Front IP65 (with NEMA panel), Back IP20	
Cooling Method	Natural air circulation	
Enclosure	ABS	
PCB Coating	Yes	
Mount	Panel mount	
Panel Cutout	192x 138 mm	259 x 201 mm
External Dimensions	204 x 145 x 44.5 mm	276 x 213 x 39 mm
Weight	Approx. 650g (unit only)	Approx. 1000g (unit only)

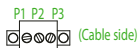
[External Dimensions/Interfaces]

Unit: mm [in.]



[Power connector]

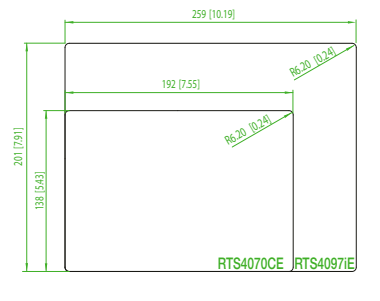
Pin Connection



Pin No.	Name
P1	+24V
P2	0V
P3	FG

[Panel Cut-Out]

Unit: mm [in.]



[COM1/COM2/COM3/COM4 connectors]

Pin Connection



Pin No.	Name
P1	Rx-(B)
P2	RxD_PLC (COM1 RS232)
P3	TxD_PLC (COM1 RS232)
P4	Tx+
P5	GND
P6	Rx+(A)
P7	RxD_PC/PLC (COM3 RS232)
P8	TxD_PC/PLC (COM3 RS232)
P9	Tx+

Pin No.	Name
P1	Rx-(B)
P2	RxD_PLC (COM2 RS232)
P3	TxD_PLC (COM2 RS232)
P4	Tx+
P5	GND
P6	Rx+(A)
P7	RxD_PC/PLC (COM4 RS232)
P8	TxD_PC/PLC (COM4 RS232)
P9	Tx+

4.3" 7"
9.7"



RTS 40xxC Series

Model: RTS4043C
Model: RTS4070C
Model: RTS4097C

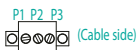
Specifications

Item	RTS4043C	RTS4070C	RTS4097C
Display type	TFT color LCD IPS		
Screen size	4.3 inch (10.9cm)	7 inch (17.7cm)	9.7 inch (24.6cm)
Display Resolution	480x272 pixel	800x480 pixel (WVGA)	1024x768 pixel (XGA)
Color indication	24-bit Color (16.2M)		
Indication degree	160 deg.		180 deg.
Backlight	LED Type		
Backlight duration	50,000 hours		
Brightness	420 cd/m ²	360 cd/m ²	350 cd/m ²
Touch panel	4 wires resistive touch screen (Surface hardness 4H)		
CPU	600MHz ARM Cortex A8		
Flash Memory	128MB		
Operation RAM	128MB		
RTC Function	Built-in		
Ethernet	-		
SD Card Slot	-		
USB Host	1 channel, USB 2.0 host (mouse, keyboard, printer, barcode reader and USB memory driver is available)		
USB Client	1 channel, USB 2.0 slave (for download and upload project file)		
RS-232C	1 channel - COM3		
RS-485	-		
RS-232/422/485	1 channel, 232/422/485 Combination		
COM Port Isolation	Yes		
Input Power	DC24V, input range DC 9V~28V		
Power Isolation	-		
Power Consumption	< 5W	< 10W	
Power Down Allowed	< 5ms		
Power Protection	Protected from thunder strike and surging		
Multi-language	Up to 32 language simultaneously		
Animation	GIF format is available		
Recipe	Available		
Data logging	Available		
Macro executor	Available		
Download project	U-Disk/USB Device		

Item	RTS4043C	RTS4070C	RTS4097C
Certificate			
CE & RoHS	CE: Complied with EN61000-6-2:2005, EN61000-6-4:2007 RoHS: Surge Immunity:±1KV, EFT:±2KV; ESD:4KV, Air:8KV		
Operating Temperature	0 °C .. +50 °C		
Storage Temperature	-20 °C .. +60 °C		
Operating Humidity	10~90%RH (No condensate)		
Vibration Endurance	10~25Hz (X, Y, Z direction 2G/30 minutes)		
Degree of Protection	Front IP65 (with NEMA panel), Back IP20		
Cooling Method	Natural air circulation		
Enclosure	ABS		
PCB Coating	Yes		
Mount	Panel mount		
Panel Cutout	120 x 93 mm	192 x 138 mm	259 x 201 mm
External Dimensions	128 x 102 x 32 mm	204 x 145 x 44.5 mm	276 x 213 x 39 mm
Weight	Approx. 430g (unit only)	Approx. 900g (unit only)	Approx. 1360g (unit only)

[Power connector]

Pin Connection



Pin No.	Name
P1	+24V
P2	0V
P3	FG

[COM1/COM3 connector]

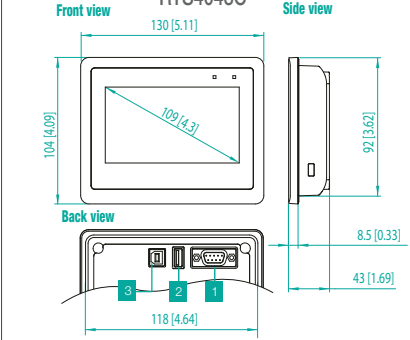
Pin Connection



Pin No.	Name
P1	Rx-(B)
P2	RxD_PLC (COM1 RS232)
P3	TxD_PLC (COM1 RS232)
P4	Tx+
P5	GND
P6	Rx+(A)
P7	RxD_PC/PLC (COM3 RS232)
P8	TxD_PC/PLC (COM3 RS232)
P9	Tx+

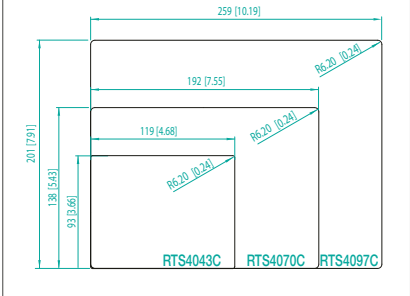
[External Dimensions/Interfaces]

Unit: mm [in.]



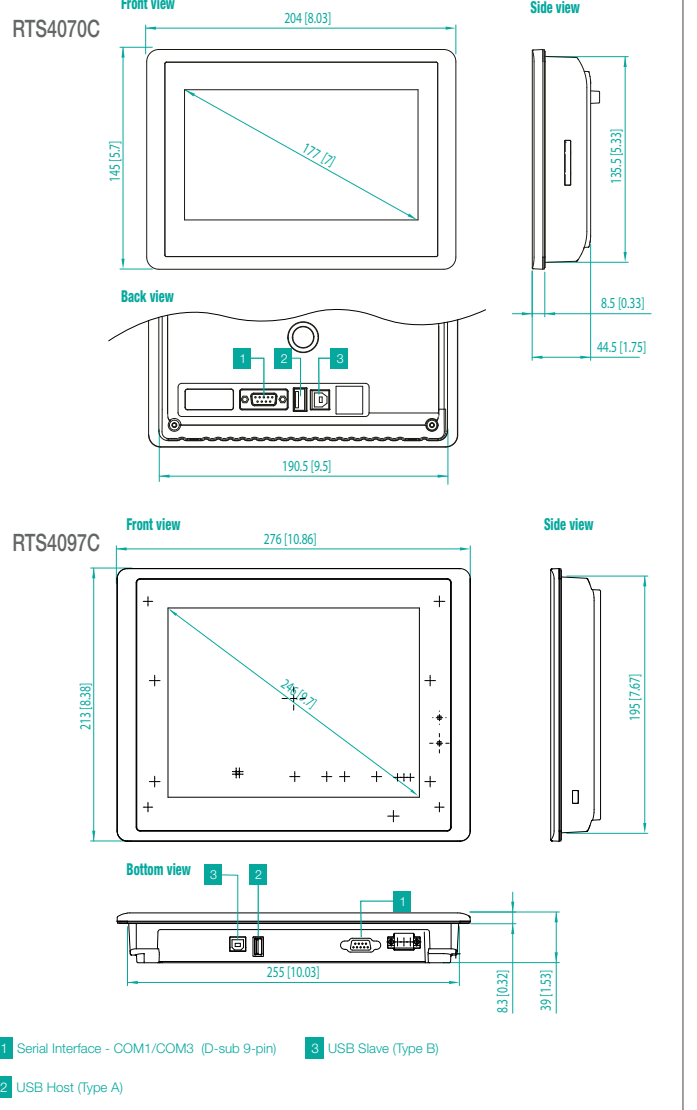
[Panel Cut-Out]

Unit: mm [in.]



[External Dimensions/Interfaces]

Unit: mm [in.]



4.3"



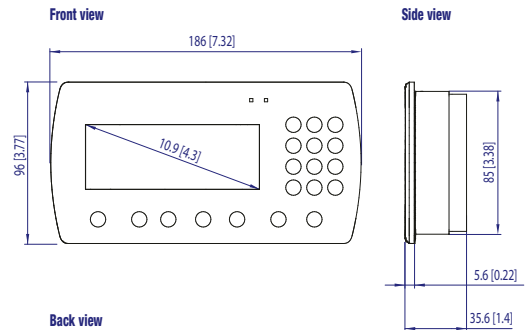
RTP 10xx Series

Model: RTP1043

Specifications

Item	RTP1043		
Display	Display type	STN LCD	
	Screen size	4.3 inch (10.9cm)	
	Display Resolution	192x64 pixel	
	Color indication	Mono	
	Indication degree	120 deg.	
	Backlight	LED Type	
	Backlight duration	50,000 hours	
Hardware	Brightness	60 cd/m ²	
	Touch panel	-	
	CPU	72MHz ARM Cortex M3	
	Flash Memory	256KB	
	Operation RAM	256KB	
	RTC Function	Built-in	
	Ethernet	-	
	SD Card Slot	-	
	I/O Ports	USB Host	-
		USB Client	1 channel, USB 2.0 slave (for download and upload project file)
RS-232C		1 channel - COM1	
RS-485		-	
RS-232/422/485		1 channel, 232/422/485 Combination - COM0	
COM Port Isolation		Yes	
Power	Input Power	DC12/24V, input range DC 9V~36V	
	Power Isolation	Isolated Transformer	
	Power Consumption	< 4W	
	Power Down Allowed	< 5ms	
	Power Protection	Protected from thunder strike and surging	
Features	Multi-language	Up to 8 language simultaneously	
	Animation	GIF format is available	
	Recipe	-	
	Data logging	-	
	Macro executor	-	
	Download project	USB Device	

Item	RTP1043	
Certificate		
CE & RoHS	CE: Complied with EN61000-6-2:2005, EN61000-6-4:2007 RoHS: Surge Immunity:±1KV, EFT:±2KV; ESD:4KV, Air:8KV	
General Specifications	Operating Temperature	0 °C .. +45 °C
	Storage Temperature	-20 °C .. +70 °C
	Operating Humidity	10~90%RH (No condensate)
	Vibration Endurance	10~25Hz (X, Y, Z direction 2G/30 minutes)
	Degree of Protection	Front IP65 (with NEMA panel), Back IP20
	Cooling Method	Natural air circulation
	Enclosure	ABS
	PCB Coating	Yes
	Mount	Panel mount
	Panel Cutout	165 x 86 mm
	External Dimensions	186 x 96 x 35.6 mm
	Weight	Approx. 300g (unit only)

[External Dimensions/Interfaces]
Unit: mm [in.]

1 Serial Interface - COM0/COM1 (D-sub 9-pin) 2 USB Slave (Type B)

[Power connector]

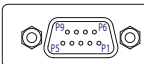
Pin Connection



Pin No.	Name
P1	+24V
P2	0V
P3	FG

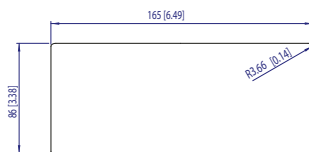
[COM0/COM1 connector]

Pin Connection

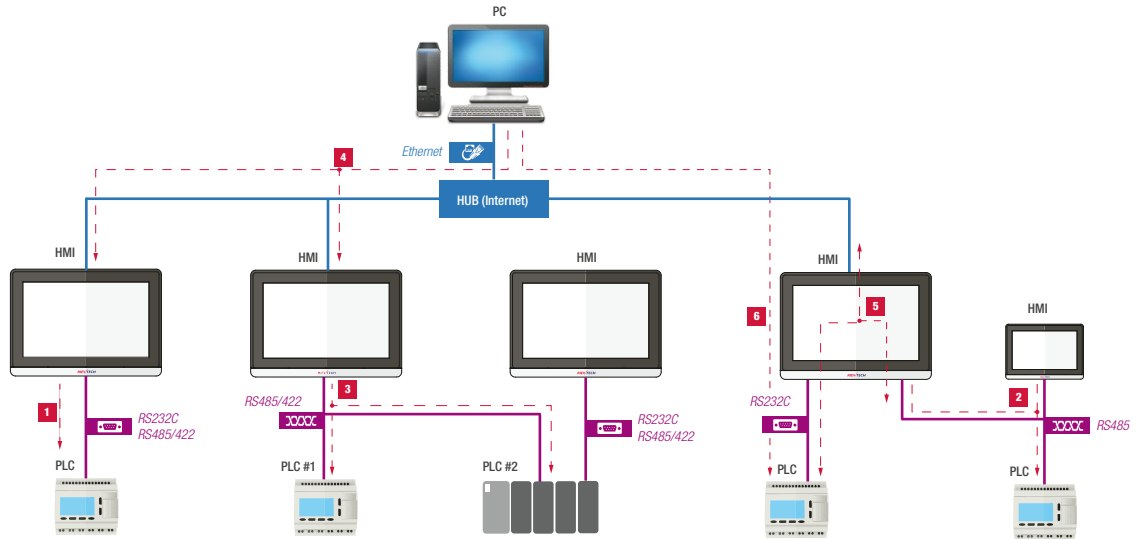


D-Sub 9-pin (Unit side)

Pin No.	Name
P1	Tx+
P2	COM0 RxD
P3	COM0 TxD_
P4	COM1 TxD_
P5	GND
P6	Tx-
P7	COM1 RxD
P8	Rx- (B)
P9	Rx+ (A)

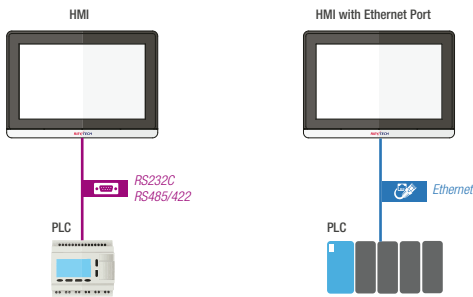
[Panel Cut-Out]
Unit: mm [in.]

Communication Configurations



1 1 : 1 Serial/Ethernet Communication

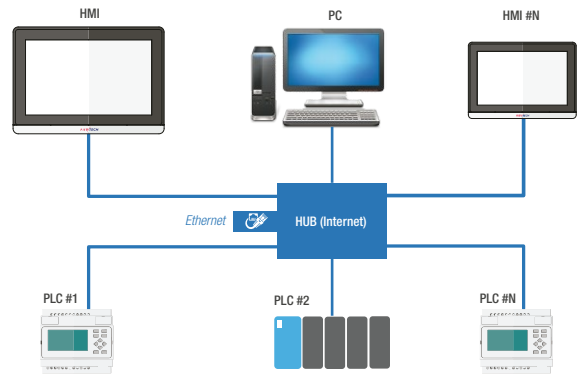
One controller to one Rievtech Panel



*- In case of the 1:1 Ethernet communication, a cross cable should be used.

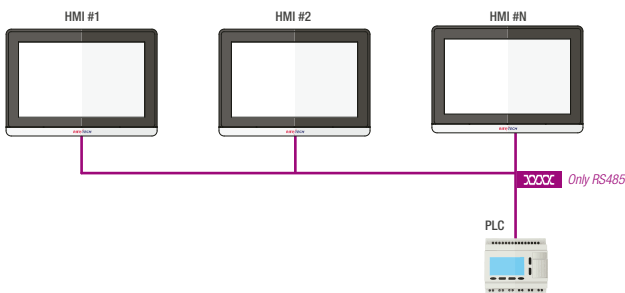
4 Ethernet Connection

If an Ethernet-compatible Rievtech HMI is used, the HMI can connect to PLCs, HMIs or other devices connected to LAN



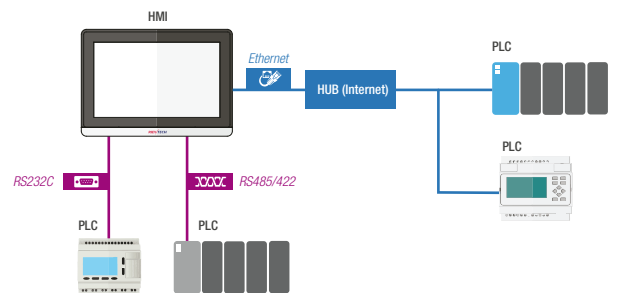
2 N : 1 Serial Communication

One controller to multiple Rievtech Panels
Up to 16 HMIs can be connected to each of the PLC's RS-485 ports.



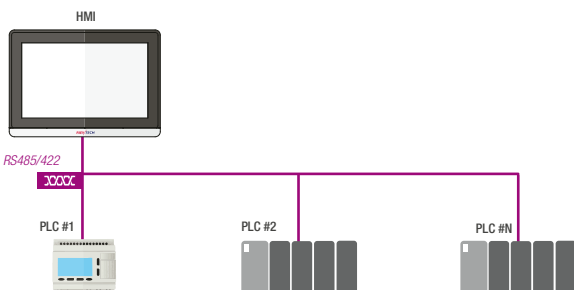
5 Connection with Multiple Devices

Simultaneous connection one Rievtech HMI to 2-4 Serial Devices + Ethernet



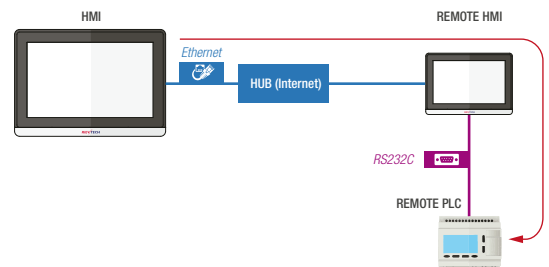
3 1 : N Serial Communication

Multiple controllers to one Rievtech Panel
Max. number of nodes: 32 nodes



6 Connections Over Network Levels

The Rievtech HMIs can connect to a variety of devices in the network, through network levels. For example, an HMI connected by Ethernet can be used to monitor the information in a Remote PLC connected through Serial to a Remote HMI





No. 88, Dazhou Road,
Yuhuatai Dist., Nanjing,
Jiangsu, China (Mainland)

Tel. +86-025-52895099
Tel. +86-025-52890128
Fax +86-025-52890128

info@rievtech.com - General
sales@rievtech.com - Commercial
tech@rievtech.com - Technical

www.rievtech.com