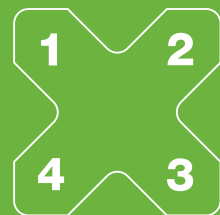


Innovative Solutions Overview



MULTIPLIESTHEEXPERIENCE



THE VALUES OF A COHESIVE GROUP

BECAUSE WE BELIEVE IN WHAT WE CREATE TOGETHER EVERY DAY

Founded in 1978, in Italy, with 40 years of experience in steel, stainless steel, extruded aluminium and copper production, more than 220 operating staff, ETA Group represents a safe and recognized benchmark for the global enclosures market as a manufacturer of high quality innovative solutions for Industrial automation, Harsh environments, LV Power distribution and Information technology.

In 2018, ETA is opening its fourth manufacturing unit, thus proudly widening and covering a total area of 70.000 m². Thanks to this new investment, ETA Group will consist of HQ, 4 manufacturing units and 1 logistic center in Italy, 1 manufacturing



unit in Romania, 3 sales subsidiaries in Europe (UK, France and Poland), 1 representative office in Russia (Saint Petersburg), 1 branch office in Cyprus for the Middle East markets and an extensive sales network throughout Italy and around the world in more than 40 countries.



1978	1980	1990	1992	1996	1998	1999	2000	2001	2002
Antonio Turati's Heirs found ETA. The first unit in Castelmarte (CO), Italy, is established.	The first CNC machine is installed.	AR9000: a successful cabinet.	The new HQ and manufacturing unit in Canzo (CO), Italy, are established.	The World Wide Web: ETA is on-line with its corporate website.	The first sales subsidiary ETA UK is established. Pronto Quadro: the first ETA software is launched on the market.	ARETA: the revolutionary concept of the flat-pack cabinet.	ARETA is awarded with the Electrical Products Award.	A new production unit in Asso is established.	Sales subsidiary ETA France is established.

40 YEARS OF ETA

4 BUSINESSES, 4 MATERIALS, FOR A STORY THAT IS ALWAYS EVOLVING



ETA - MULTIPLIES THE EXPERIENCE

The adoption of new raw materials is a symbol of our company's growth: a different metal for each decade, for each investment, for each new market.

It was all born in 1978, with sheet steel, the base material for Industrial Automation Enclosures. It evolved naturally into stainless steel, for uses in harsh environments. More recently, aluminium was introduced for outdoor solutions. In the last decade, copper was introduced as a fundamental material for LV energy distribution.

In 2018 we will be celebrating our 40th anniversary with a production that has grown over the years, offering products for four different sections: Industrial automation, Harsh Environments, Low-voltage power distribution, and Networks for information technology, data and security.

Quality, sustainable innovation and flexibility



ETA is a solid company that strongly believes in evolution which goal is design and build high-quality Enclosures, combining innovation with the experience acquired in all the years it has been active in the sector.

INNOVATION

Value of important choices: advanced technology, long-term vision, intuitions, investments and new projects.

FLEXIBILITY

Flexibility of thought in responding to the needs of a changing market and product flexibility in the customization of standard solutions.

QUALITY

Reliable and competent people you can rely on, constantly monitored business processes, certified products developed through careful design and implementation.

2004	2008	2011	2013	2014	2015	2016	2018	
Canzo site is growing.	The manufacturing unit in Albavilla (CO), Italy, is established. The coating plant with leading-edge technology and solutions is inaugurated.	ETA presents the new corporate logo and launches E NUX: innovative manufacturing concept and materials.	ETA handle is awarded by ADI with Honourable mention for Compasso d'Oro. The new unit dedicated to stainless steel enclosures manufacturing is established.	ENERPOWER, the new system specifically designed for LV Energy distribution.	At Hannover Messe ETA "Multiplies the experience". ABACUS – for IT business – is launched on the market, dedicated to networks and information technology.	A new manufacturing unit (dedicated to ENERPOWER) is established.	Creation of ETA NEXT - The R&D laboratory of ideas and solutions where tomorrow's products take shape. The Canzo offices are expanded. Our new double-layer treatment, EDUP, is presented.	Our fortieth anniversary is celebrated. A line dedicated to E COR production is created. We present the software Calamus Interactive that places clients in contact with factories 4.0



THE R&D LABORATORY OF IDEAS AND SOLUTIONS WHERE TOMORROW'S PRODUCTS TAKE SHAPE

In 2017, ETA's HQ was expanded with a new two-story glass building perfectly integrated to the architecture of the existing building and in harmony with the surrounding environment.

On the upper floor, new offices for our constantly growing team. ETA Next occupies the ground floor.

ETA Next is a laboratory that can Imagine, Design and Build, with the goal of offering new standard products and solutions as well as projects dedicated to our business partners. A veritable research centre for the R&D Function of ETA, where a client's every need can be studied, the parts of a project can be tested thanks to the production systems entirely dedicated to prototypes and testing, and the most efficient and effective alternative can be selected. In brief, a laboratory of ideas and solutions.

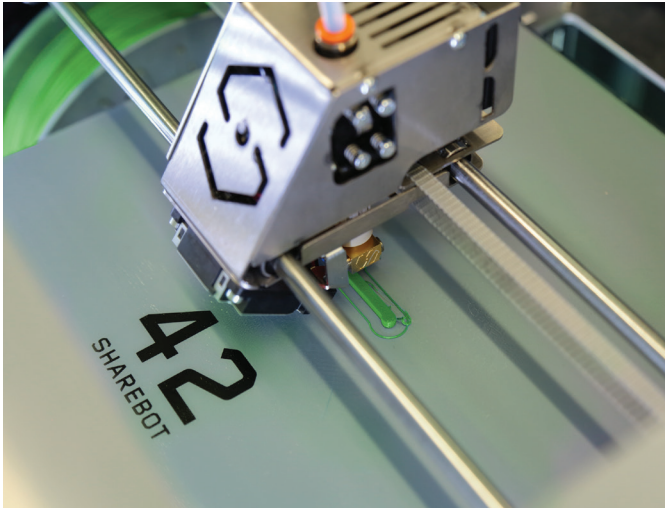
Within ETA Next there is also an entire department dedicated to Quality and Safety, to be on the avant-garde when it comes to certifications and the sector's regulations and standards, and to respond to the precise and unique market requests, thanks to a dedicated laboratory complete with all necessary tools and equipment.

In order to grow, it is crucial to identify and create a corporate Vision that is in line with the company's own values and Mission. And while the corporate Vision embodies its dream, what we want our company to be like in the future, Our Dream is beginning to take shape. Our Vision is called ETA NEXT.

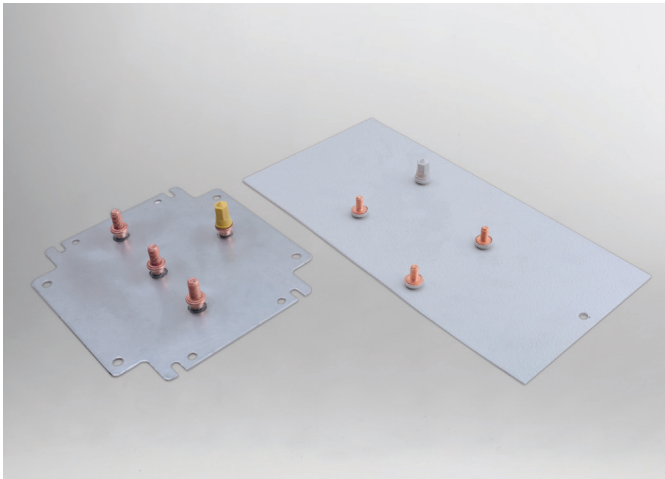


The president Aldo Turati with his sister Luigia, CEO.

CANZO 2018 CREATION OF ETA NEXT, ETA'S RESEARCH CENTRE TO CREATE THE PRODUCTS THAT ARE STILL TO COME



3D printer used to prototype new parts and new ideas for innovative solutions.

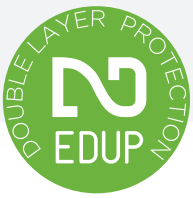


Among the many projects signed by ETA Next was the improved seal of copper nuts for earthing. The "short arc" welding of copper, to ensure absolute sealing.



Another success of ETA Next's research: the project of the new range of E COR enclosures.





DOUBLE LAYER PROTECTION TREATMENT

For the first time ever, the cathodic electrocoating process is applied to enclosure spray painting. The system is called E DUP, double protection.



After a thorough study of the various solutions offered by the market, ETA decided to introduce the CATHODIC ELECTROCOATING process for the application of a primer of undisputed chemical and physical properties, to ensure better product performance. The goal is to offer increasingly reliable, performing and suitable solutions for a variety of environments and applications.

The new E DUP treatment – Double Layer Protection – includes a first layer of paint using cathode electrophoresis with epoxy resin and a topcoat of epoxy-polyester thermosetting powder, according to the standard ETA electrostatic cycle (ETA RAL7035, textured, or an entire range of RAL colours available upon request).

The highly automated and innovative process has made it possible to obtain results of high qualitative characteristics, reducing the thickness of topcoats and eliminating wasted paint, in full respect of environmental sustainability.

Only ETA makes E DUP: double protection for unique products.



After the E DUP coating, the finished parts remain in wait of a buffer before moving on to the assembly department.

DOUBLE PROTECTION FOR UNIQUE PRODUCTS

As of today ETA painted products are featured by a double treatment. E DUP painting Cycle includes a first Cathodic Electrocoat Epoxy Resin and a topcoat with ETA standard powder coating. Only ETA does this to offer "unique products"



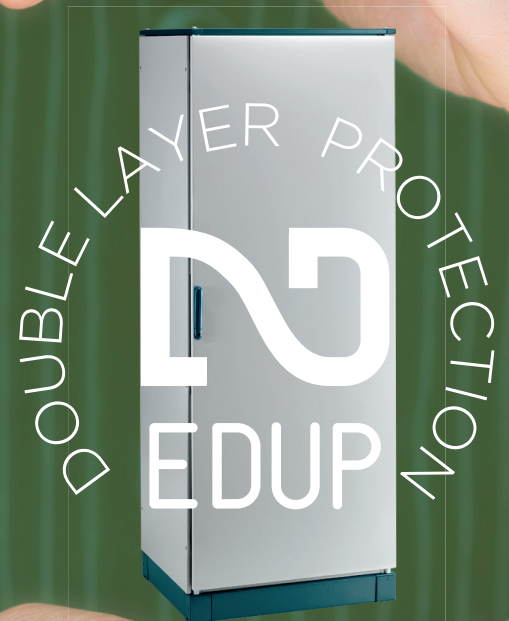
After degreasing and cleaning the sheet metal, the parts are immersed in a large vat where electrophoresis takes place.



The automated powder coating cabin.



At the ETA Next's Research Centre, a chamber for saline mist is installed to test the effectiveness of the E DUP coating.





SOLUTIONS WITH ATEX AND HAZLOC MARKINGS THE NEW FRONTIER OF PROTECTION

Solutions certified as ATEX and HazLoc embody the requirements of a growing market: the requisites for applications in Potentially Explosive Environments are particularly strict, the related standards are complex, and the installation variables are countless.

The solutions designed by ETA specifically for this market comply with:

Ex = ATEX marking (European Directive).

IECEx = HazLoc marking (global IEC = International Electrotechnical Commission).

CERTIFICATIONS

- Certification of system quality guarantee for the processes related to the ATEX product: (UNI EN 13980) relative to the ATEX quality management system (annual inspection) called "Potentially explosive atmospheres: application of quality systems" (certified IMQ10 atex 035 Q).
- ISO9001 process certification relative to the processing of stainless steel and its transformation into finished products.
- EC examination type certification for empty casings (IMQ10 atex 037 U certificate).
- IEC international examination certification (IEC Ex).



COMMON CHARACTERISTICS AND EXTRA FEATURES

- Self-certification for the other dimensions within the min/max limits: category 3, zone 2, 22.
- Template different from the standard, but in accordance with the positioning obligations (Instructions)
- Available in version AISI304L / AISI316L / sheet steel, painted, maximum thickness: 200 microns (with original accessories certified for stainless steel versions)
- Clients can use the previously marked ETA product as a component and certify ONLY the finished product, without the need to repeat the relative tests (if necessary, it is possible to add thermal tests, if the laboratory selected by the client requires other documents in addition to the thermal tests already carried out and provided by ETA).

ETA SOLUTIONS

ETA PRODUCT	CODE	MATERIAL	NEMA / IP	ATEX	HAZLOC	MARKING	CERTIFIED
Wall-mounting box	ECOR...EEX	Sheet stainless steel	Nema 4X / IP66	●		Ex II 2G Ex eb IIC Gb Ex II 2D Ex tb IIIC Db	IMQ 09 ATEX 037 U
Wall-mounting box	ST...EE	Sheet steel	Nema 4 / IP66	●		Ex II 2G Ex eb IIC Gb Ex II 2D Ex tb IIIC Db	IMQ 09 ATEX 037 U
Pushbutton box	SHX	Sheet stainless steel	Nema 4X / IP66	●		Ex II 2G Ex eb IIC Gb Ex II 2D Ex tb IIIC Db	IMQ 17 ATEX 003 U
Pushbutton box	ETSX	Sheet stainless steel	IP66	●		Ex II 2G Ex eb IIC Gb Ex II 2D Ex tb IIIC Db	IMQ 17 ATEX 003 U
Modular cabinet	ENUX	Sheet steel	IP66 / Nema 4		●	Class I Division II Class II Division II	Intertek 5007845
Modular cabinet	ENUX...X	Sheet stainless steel	IP66 / Nema 4		●	Class I Division II Class II Division II	Intertek 5007845

NOTE: see pag. 20 and 23 for item numbers and specifications.



The tests the enclosures must pass to obtain the certification include sealing against water and dust. More specifically, talk is introduced into a chamber using pressure. The chamber contains the enclosure, which must be completely sealed so as not to allow the talc in.



PROTECT

YOUR PLANTS

AGAINST EXPLOSIONS



ATEX

CERTIFIED

SOLUTIONS





NEW E COR RANGE WHEN FLEXIBILITY IS A FACTORY STANDARD



e cor

MILD STEEL

In 2019, ETA introduces its new range of wall-mounting boxes E COR sheet steel, the result of ETA's typical flexibility philosophy.

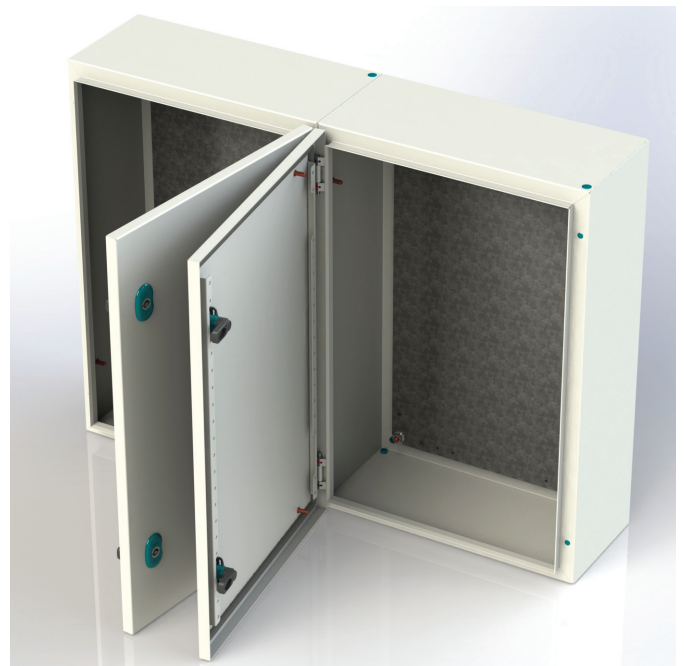
Within the production plant in Albavilla, in the area that was the subject of an industrial and sustainable recovery in 2016, a new dedicated production line was installed in 2018, in line with the concept of Industry 4.0. Dedicated systems, fully integrated and customised for ETA: a significant investment where the distinctive element is an extreme flexibility of processes as well as an absolutely innovative technology.

These are the cornerstones of the project. Its final goal is to offer the client the possibility to select a standard product from the catalogue or to choose a product that is customised for size and personalisations, with manufacturing times comparable to those of a series production, and minimum order required.

The process begins with the client's needs. It takes shape in the dedicated online order configuration program, Calamus Interactive. It becomes concrete with ETA's technology. For you.

PLUS

- Wide range of standard sizes and flexibility of manufacturing
- Boxes can be placed side by side
- Increased internal capacity (depth)
- Wider cable entrance, with reflanged and conductive flange
- Inner plate marked and easy to assemble
- Door: new closing system with metal insert, hinge and door profile
- New functional system for accessory installation
- New wall-mounting system
- New product coding system





CALAMVS
INTERACTIVE

An online configurator that listens to the client's needs and communicates with ETA's automated lines, in full conformity with the prerequisites of Industry 4.0. In just a few simple steps it is possible to select, set up and personalise the E COR enclosure of sheet steel most suitable for the final application (size, drilling, accessories, prisoners and finishing), obtaining our offer and availability in real time. An easy-to-use instrument that is in constant evolution.



Your demands are our inspiration!

The value of flexibility

When it is necessary to think out of the box to come up with an unusual solution, ETA develops the product that best adapts to the specific application.

Personalisation capacities are shaped when different needs arise: bending/stamping systems and advanced laser-cutting technology for drilling holes, an automatic painting system for RAL colours and special finishes/cycles, a skilled technical staff to help you define product specifications that fulfil your needs.



DISCOVER A NEW WORLD!

A new Reserved Area completely integrated with our corporate website www.eta.it.

The tool – developed in-cloud with an eye-catching layout – is easily accessible from any device (PC, tablet or smartphone) by simply using user's Login data.

myETA is complete with 2D and 3D drawings, declarations of conformity, technical E BOOK, software and much more!





PEOPLE



Aldo Turati
President



Marco Maule
Export Area Manager



Adriano Lanzoni
Area Manager



Luigia Turati
Managing Director



Mauro Rimessi
Sales Channel Manager



Massimo Sala
Area Manager



Samanta Turati
*Financial Controller
Manager*



Mark Greaves
*General Manager
ETA UK*



Giorgio Marelli
TLC Sales Manager



Antonio Turati
*Production & Logistics
Executive director*



Elisa Paredi
Marketing Manager



Massimo Berti
*Data Centre
Department Manager*



Veronica Turati
Marketing Department



Alessandro Ferrari
Purchasing Manager



Alberto Prato
*B.U. Enerpower
Sales Manager*



Diego Iotti
Export Manager



Andrea Costamagna
R&D Technical Manager



Norberto Citterio
*National Sales
Manager*



Barbara Tessari
QHSE Manager



THE CABINET FOR AUTOMATION SUITABLE FOR MULTIPLE SOLUTIONS



e nux



SUITE CABINET SYSTEM

- Use of high-strength sheet steel to obtain a very robust structure
- New manufacturing and technical concepts
- Design and high aesthetics with new colour (RAL5020 for roof, handle and plinth)
- Already assembled or flat-pack version with 8 screws only (E NUX D=1000 only assembled version)
- 90 standard dimensions
- Wide range of accessories
- Protection rating: IP55, Nema 12, IK10.

Available on request:

- Versions IP > 55
- Certified solutions with seismic design
- Nema 4



Conformity with IEC 61439 - 1/2 *

Bar distribution system tested on ETA enclosure at CESI (test report CESI A4/510927).

*where applicable



DIMENSIONS, RANGE AND ACCESSORIES:

e nux

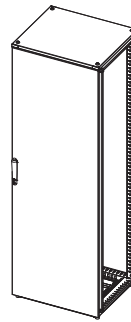
SUITE CABINET SYSTEM					
W	H	D	W	H	D
400	1600	400	1000	1600	400
400	1600	500	1000	1600	500
400	1600	600	1000	1600	600
400	1800	400	1000	1800	400
400	1800	500	1000	1800	500
400	1800	600	1000	1800	600
400	1800	800	1000	1800	800
400	2000	400	1000	2000	400
400	2000	500	1000	2000	500
400	2000	600	1000	2000	600
400	2000	800	1000	2000	800
400	2200	500	1000	2200	500
400	2200	600	1000	2200	600
400	2200	800	1000	2200	800
600	1400	400	1200	1400	400
600	1400	500	1200	1400	500
600	1600	400	1200	1600	400
600	1600	500	1200	1600	500
600	1600	600	1200	1600	600
600	1800	400	1200	1800	400
600	1800	500	1200	1800	500
600	1800	600	1200	1800	600
600	1800	800	1200	1800	800
600	2000	400	1200	2000	400
600	2000	500	1200	2000	500
600	2000	600	1200	2000	600
600	2000	800	1200	2000	800
600	2000	1000	1200	2000	1000
600	2200	500	1200	2200	500
600	2200	600	1200	2200	600
600	2200	800	1200	2200	800
800	1400	400	1400	2000	400
800	1400	500	1400	2000	500
800	1600	400	1400	2000	600
800	1600	500	1400	2000	800
800	1600	600	1600	1400	400
800	1800	400	1600	1400	500
800	1800	500	1600	2000	400
800	1800	600	1600	2000	500
800	1800	800	1600	2000	600
800	2000	400	1600	2000	800
800	2000	500			
800	2000	600			
800	2000	800			
800	2000	1000			
800	2200	500			
800	2200	600			
800	2200	800			

These dimensions are referring to the assembled version with blank door and rear panel; please check our General Catalogue for further details.

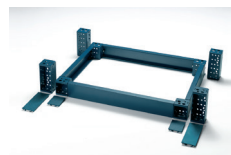
[ENUX][08 20 05][PR]

1 2 3
Range/item W H D Configuration

Example



Cabinet dim.
W 800 x H 2000 x D 500 mm
with frontal blank door
and screwed rear panel.



ASSEMBLED VERSION

[ENUX][08 20 05][PR]

1 2 3

- PR** E NUX assembled cabinet with frontal blank door and screwed rear panel
- PV** Assembled E NUX cabinet with frontal plexi door and screwed rear panel
- DP** Assembled E NUX cabinet with frontal blank door and rear blank door
- ST** Assembled E NUX structure (for modular cabinet with multiple doors) with screwed rear panel
- CEC** E NUX PC cabinet with folding keyboard, upper plexi door, lower blank door and rear blank door
- PRX** Assembled E NUX cabinet manufactured from stainless steel AISI304L with frontal blank door and screwed rear panel
- PRXH** Assembled E NUX cabinet manufactured from stainless steel AISI316L with frontal blank door and screwed rear panel
- PVX** Assembled E NUX cabinet manufactured from stainless steel AISI304L with frontal plexi door and screwed rear panel
- PVXH** Assembled E NUX cabinet manufactured from stainless steel AISI316L with frontal blank door and screwed rear panel

* Please add the suffix A to the code to order the version in Pantone 2717U

HOW TO CONFIGURE YOUR SOLUTION

FLAT-PACK VERSION

TOP + BOTTOM*

[EUTF][080 050]

1 2

BLANK DOOR WITH N. 2 STRUCTURAL UPRIGHTS*

[EUPO][080 200]

1 2

* EUPV Plexi door with n. 2 structural upright

* For the modular cabinet with multiple doors or for the PC cabinet with folding keyboard, please order the code EUMT000200 (n. 2 frontal structural uprights)

SCREWED REAR PANEL WITH N. 2 STRUCTURAL UPRIGHTS

[EURE][080 200]

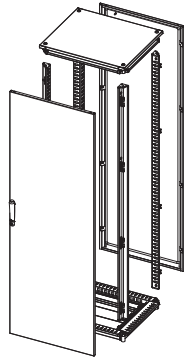
1 2

FRONT INSERTED MOUNTING PLATE

[EUPA-][080 200]

1 2

+ WTKB-002 (mounting kit for front inserted mounting plate)



SIDE PANELS (2 PCS)

[EUFI][050 200]

1 2



MODULAR PLINTH*

[EUZE-][A100]

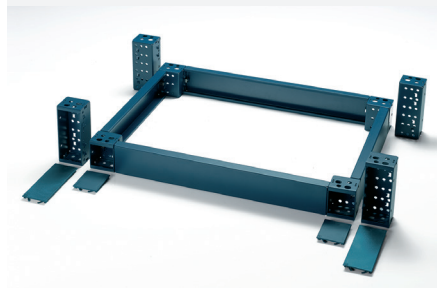
1 2

[EUZE-][T0800]

1 2

[EUZE-][T0500]

1 2



ACCESSORIES

EUPI inner door
EUPA front inserted mounting plate
EUKU joining kit
WTGS-001 lifting eyebolts



* For top, handle and plinth in Pantone2717U , please add the suffix A to the code

e nux



MODULAR CABINETS FOR LV ENERGY DISTRIBUTION

1. Solution with multiple doors
 2. Solution with inner doors and plexi (or blank) frontal door
- Available in both assembled and flat-pack version
 - Protection rating (valid for version n. 2 only): IP55, Nema 12, IK10.

MODULAR CABINETS		
W	H	D
600	1800	400
600	1800	500
600	1800	600
600	1800	800
800	1800	400
800	1800	500
800	1800	600
800	1800	800
600	2000	400
600	2000	500
600	2000	600
600	2000	800
800	2000	400
800	2000	500
800	2000	600
800	2000	800



PC CABINET WITH EXTRACTABLE SHELF

- Assembled version with rear blank door and front section consisting in: upper plexi door, extractable drawer, lower blank door
- Flat-pack version with front section part to be completed according to customers' requirements
- Protection rating: IP55.

PC CABINETS WITH EXTRACTABLE SHELF		
W	H	D
600	1800	600
600	1800	800
600	2000	600
600	2000	800



CABINETS FOR RACK 19\"/>

A wide range of accessories compatible with E NUX range:

- 19" rack frames completely modular and suitable for high loads
- 19" rack uprights or system plus uprights
- 19" rack fixed frames
- Fixed or sliding shelves
- Punched or blank panels
- Ventilation accessories

Available: 19" rack boxes from 6 to 21 HE with depth 450 and 550 mm.



e mox



MONOBLOC CABINET

Ideal solution for single monobloc freestanding cabinet, with a completely welded structure, removable screwed rear panel and modular cable entry.

- Available in 22 standard dimensions with blank door (single or double), with plexi door (up to W = 1000 mm) and in horizontal version
- Supply includes mounting plate
- Protection rating: IP66 (single door) - IP55 (double door), Nema 12, IK10.

Accessories

Modular plinth EUZE
Lifting eyebolts WTGS-003
Internal uprights.



MONOBLOC CABINET HORIZONTAL VERSION

Ideal solution for monobloc freestanding cabinet, with a completely welded structure, removable screwed rear panel and modular cable entry.

- Available in 5 standard dimensions with blank door complete with ø 3 mm lever-operated double bar locking system
- Supply includes mounting plate
- Protection rating: IP55, Nema 12, IK10.

Accessories

Modular plinth EUZE
Lifting eyebolts WTGS-003
Internal uprights.

MONOBLOC CABINET				MONOBLOC CABINET			
W	H	D	CODE	W	H	D	CODE
600	1600	400	EMOX061604PR	1200	1600	400	EMOX121604PR
600	1800	400	EMOX061804PR	1200	1800	400	EMOX121804PR
600	1800	500	EMOX061805PR	1200	1800	500	EMOX121805PR
600	2000	400	EMOX062004PR	1200	2000	400	EMOX122004PR
600	2000	500	EMOX062005PR	1200	2000	500	EMOX122005PR
800	1600	400	EMOX081604PR	1600	1800	400	EMOX161804PR
800	1800	400	EMOX081804PR	1600	2000	400	EMOX162004PR
800	1800	500	EMOX081805PR				
800	2000	400	EMOX082004PR				
800	2000	500	EMOX082005PR				
1000	1600	400	EMOX101604PR				
1000	1800	400	EMOX101804PR				
1000	1800	500	EMOX101805PR				
1000	2000	400	EMOX102004PR				
1000	2000	500	EMOX102005PR				

HORIZONTAL VERSION			
W	H	D	CODE
1200	800	400	EMOX120804PR
1200	1000	400	EMOX121004PR
1400	1000	400	EMOX141004PR
1600	1000	400	EMOX161004PR
1800	1000	400	EMOX181004PR



e comp



**COMPACT ENCLOSURES
SINGLE DOORS**

E COMP represents the ideal solution to meet the need of a compact solution for both free-standing and wall-mounting applications.

The range integrates perfectly with other ETA's solutions, thanks to our original building concepts, our captivating designs, and the unusual colours used on the parts, in addition to the innovative closing system (for E COMP proposed with fixed tab).

The technical characteristics of solidity and ergonomic design are typical of E COMP, equipped with modular cable inputs and possibility to complete its configuration with standard ETA accessories (inner door, vertical profiles, quick-hooking profiles, 180° hinges, door hook).



**COMPACT ENCLOSURES
DOUBLE DOOR**

For applications where a free-standing monobloc cabinet smaller than E MOX or a wall-mounting box larger than ST is required.

- Available in 12 standard dimensions, with blank door (single or double) and plexi door (up to W = 800 mm)
- Supply includes mounting plate
- Protection rating: IP55, Nema 12, IK10

Accessories

Modular plinth EUZE

Wall-mounting brackets SDWC-010

Lifting eyebolts WTGS-003.

COMPACT ENCLOSURES SINGLE DOOR

W	H	D	CODE
600	1200	400	ECOMP61240
600	1400	300	ECOMP61430
600	1400	400	ECOMP61440
800	1200	400	ECOMP81240
800	1400	300	ECOMP81430
800	1400	400	ECOMP81440

COMPACT ENCLOSURES DOUBLE DOOR

W	H	D	CODE
1000	1200	400	ECOMP101240
1000	1400	300	ECOMP101430
1000	1400	400	ECOMP101440
1200	1200	400	ECOMP121240
1200	1400	300	ECOMP121430
1200	1400	400	ECOMP121440

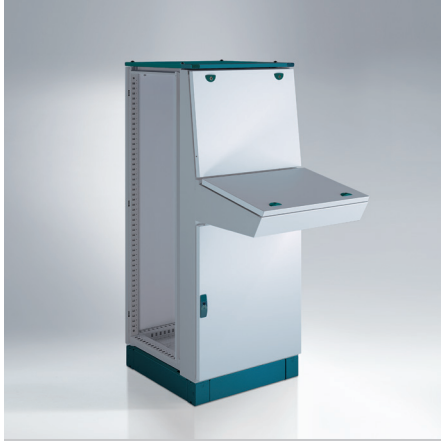




e nux

SBA

ZBA



DESK CABINETS ON E NUX STRUCTURE WITH DOOR, FRONTAL PANEL OR SHELF



MONOBLOC CONTROL DESKS SBA



MONOBLOC CONTROL DESKS ZBA

Three solutions to meet different application requirements:

- Desk cabinets on E NUX structure with door, frontal panel or shelf, and available in assembled or flat-pack version
- Modular control desks with depths 400 and 500mm, consisting in AE box, ME or LE shelf and PE upper part
- Monobloc control desks (SBA with rear door and mounting plate adjustable in depth; ZBA with rear panel and fixed mounting plate)
- Protection rating SBA, ZBA, ME, AE: IP55, Nema 12, IK 10
- Protection rating E NUX: IP55, IK10.

MONOBLOC CONTROL DESKS SBA

W	H	D	CODE
600	1000	400	SBA601
800	1000	400	SBA801
1000	1000	400	SBA001
1200	1000	400	SBA201

MONOBLOC CONTROL DESKS ZBA

W	H	D	CODE
600	1000	400	ZBA601
800	1000	400	ZBA801
1000	1000	400	ZBA001
1200	1000	400	ZBA201

AE + LE + PE + ME

DESK CABINETS

W	H	D
600	1400	400
800	1400	400
1200	1400	400
1600	1400	400
600	1400	500
800	1400	500
1200	1400	500
1600	1400	500

MODULAR CONTROL DESK

W	D	CODE	CODE	CODE	CODE
600	400	AE601	LE601	PE601	ME601
800	400	AE802	LE802	PE802	ME802
1200	400	AE123	LE123	PE123	ME123
1600	400	AE164	LE164	PE164	ME164
800	500	AE8025	LE8025	PE8025	ME8025
1200	500	AE1235	LE1235	PE1235	ME1235
1600	500	AE1645	LE1645	PE1645	ME1645



* Only for AE and ME



STANDARD BOXES



WALL-MOUNTING BOXES

More than 40 dimensions, 3 versions (blank or plexi door, single or double door, with standard locking system or rod system) and a wide range of accessories to complete your solution: MDST modular chassis, STPO1 inner door, TT roof, WE inserts, SDWC-010 wall-mounting brackets.

- Supply includes mounting plate
- Protection rating ST:
IP66, Nema4 (single door) -
Nema12 (double door), IK10
- Protection rating STP:
IP66, Nema12, IK10.

Note:
ST product range will be replaced
by E COR product range (mild steel).

ST

BOXES WITH SINGLE DOOR



W	H	D	CODE
200	300	150	ST2315 *
300	300	150	ST3315 *
300	400	150	ST3415 *
300	400	200	ST3420 *
300	500	150	ST3515 *
300	500	200	ST3520 *
400	300	150	ST4315 *
400	300	200	ST4320 *
400	400	200	ST4420 *
400	500	150	ST4515 *
400	500	200	ST4520 *
400	500	250	ST4525 *
400	600	200	ST4620 *
400	600	250	ST4625 *
400	600	400	ST4640 *
500	500	200	ST5520 *
500	700	200	ST5720 *
500	700	250	ST5725 *
600	400	200	ST6420 *
600	400	300	ST6430 *
600	600	200	ST6620 *
600	600	300	ST6630 *
600	600	400	ST6640 *
600	800	200	ST6820 *
600	800	250	ST6825 *
600	800	300	ST6830 *
600	800	400	ST6840 *
600	1000	250	ST61025 *
600	1000	300	ST61030 *
600	1000	400	ST61040 *
600	1200	300	ST61230 **
800	800	300	ST8830 *
800	800	400	ST8840 *
800	1000	300	ST81030 *
800	1000	400	ST81040 *
800	1200	300	ST81230 **

* EE version available,
ex. ST2315EE

** Boxes provided with
double door and rod system

BOXES WITH DOUBLE DOOR

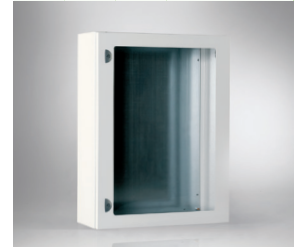


W	H	D	CODE
800	600	300	ST8630
1000	800	200	ST10820
1000	800	300	ST10830
1000	1000	300	ST101030 *
1000	1200	300	ST101230 *
1200	1200	300	ST121230 *

* Closing with rod system

STP

BOXES WITH PLEXI DOOR



W	H	D	CODE
400	300	200	STP4320
400	400	200	STP4420
400	500	200	STP4520
400	500	250	STP4525
400	600	200	STP4620
400	600	250	STP4625
500	700	200	STP5720
500	700	250	STP5725
600	400	200	STP6420
600	400	300	STP6430
600	600	200	STP6620
600	600	300	STP6630
600	800	250	STP6825
600	800	300	STP6830
600	1000	250	STP61025
600	1000	300	STP61030
600	1200	300	STP61230
800	1000	300	STP81030
800	1200	300	STP81230

ST EE WALL-MOUNTING BOXES COMPLYING WITH ATEX



- To be used in the atmospheres that are potentially explosive (ATEX) due to inflammable substances such as gas, steam, fume or dust
- Protection rating:
IP66, Nema 4, IK10
- Classification:
– Ex II 2G – Ex e IIC Gb
– Ex II 2D – Ex tb IIIC Db



* Except for ST121230



STANDARD BOXES



TERMINAL BOXES

Available in 5 different ranges: with screwed cover, with plexi cover, for bus system, with flanges, with hinged door.

- Mounting plate SDPA, DIN profiles and wall-mounting brackets SDWC-010 to be ordered separately
- Protection rating (SDV - SDF): IP66, Nema 4, IK10.

SDV

TERMINAL BOXES WITH SCREWED COVER			
W	H	D	CODE
150	150	80	SDV1108
200	200	80	SDV2208
300	200	80	SDV3208
400	200	80	SDV4208
500	200	80	SDV5208
600	200	80	SDV6208
800	200	80	SDV8208
150	150	120	SDV1112
200	200	120	SDV2212
300	150	120	SDV3112
300	200	120	SDV3212
300	300	120	SDV3312
400	200	120	SDV4212
400	300	120	SDV4312
400	400	120	SDV4412
500	200	120	SDV5212
500	300	120	SDV5312
600	200	120	SDV6212
600	300	120	SDV6312
600	400	120	SDV6412
800	200	120	SDV8212
800	400	120	SDV8412

SDF

TERMINAL BOXES WITH FLANGES			
W	H	D	CODE
300	200	120	SDF3212
300	300	120	SDF3312
400	200	120	SDF4212
400	300	120	SDF4312
400	400	120	SDF4412
500	200	120	SDF5212
500	300	120	SDF5312
600	200	120	SDF6212
600	300	120	SDF6312
600	400	120	SDF6412
800	200	120	SDF8212
800	400	120	SDF8412

SDP

TERMINAL BOXES WITH DOOR			
W	H	D	CODE
200	200	80	SDP2208
200	300	80	SDP2308
200	400	80	SDP2408
200	200	120	SDP2212
200	300	120	SDP2312
200	400	120	SDP2412
200	500	120	SDP2512
300	300	120	SDP3312
300	400	120	SDP3412

SDVX

TERMINAL BOXES WITH PLEXI LID			
W	H	D	CODE
400	200	120	SDVX4212
600	200	120	SDVX6212

SDVX-B

TERMINAL BOXES WITH BUS SYSTEM			
W	H	D	CODE
500	300	120	SDVX5312B



PLUS

Certified welding process UNI EN15614 WPAR (Welding Procedure Approval Record) and WPS (Welding Procedure Specification).

Certification of the quality management system according to ATEX standard.

Highly qualified & well trained staff.

Customisation with holes, cut-outs, special dimension & professional assistance for special projects.



ATEX DIRECTIVE



ISTITUTO ITALIANO DELLA SALDATURA



ISO 9001

e nux

STAINLESS STEEL



E NUX SUITE CABINETS

- Designed and manufactured according to the new concepts typical of E NUX
- Front inserted mounting plate EUPA and side panels EUFX to be ordered separately
- Protection rating: IP55, Nema 12, IK10.

e mox

STAINLESS STEEL



E MOX MONOBLOC CABINETS

- Completely welded structure with removable screwed rear panel
- Supply includes mounting plate
- Protection rating: IP66 (single door) - IP55 (double door), Nema 12, IK10.

Research

Use of silicone seal for the new ranges of stainless steel products.

Design

A new locking cover for boxes E COR with double door, a functional and eye-catching handle used for cabinets E NUX, E MOX and E COMP.

Strength

New E COR, E NUX, E MOX and E COMP front door, produced with formed corners. E NUX structure proposed with the same high-performance constructive concepts of the sheet steel version.

Added value

Cabinet E NUX and boxes E COR provided with AISI316L stainless steel hinges. E NUX components: rear panel fixing brackets, side panel fixing brackets, door locking points, everything manufactured from stainless steel AISI316L.

STAINLESS STEEL SUITE CABINETS

W	H	D	CODE
600	1800	400	ENUX-061804PRX *
600	1800	500	ENUX-061805PRX *
600	2000	500	ENUX-062005PRX *
600	2000	600	ENUX-062006PRX *
800	1800	400	ENUX-081804PRX *
800	1800	500	ENUX-081805PRX *
800	2000	500	ENUX-082005PRX *
800	2000	600	ENUX-082006PRX *
1000	1800	500	ENUX-101805PRX *
1000	1800	600	ENUX-101806PRX *
1000	2000	500	ENUX-102005PRX *
1000	2000	600	ENUX-102006PRX *
1200	1800	400	ENUX-121804PRX
1200	1800	500	ENUX-121805PRX
1200	2000	500	ENUX-122005PRX
1200	2000	600	ENUX-122006PRX

* Dimensions available with plexi door too

STAINLESS STEEL MONOBLOC CABINETS

W	H	D	CODE
600	1600	400	EMOX-061604PRX
600	1800	400	EMOX-061804PRX
600	1800	500	EMOX-061805PRX
600	2000	400	EMOX-062004PRX
600	2000	500	EMOX-062005PRX
800	1600	400	EMOX-081604PRX
800	1800	400	EMOX-081804PRX
800	1800	500	EMOX-081805PRX
800	2000	400	EMOX-082004PRX
800	2000	500	EMOX-082005PRX
1000	1800	400	EMOX-101804PRX
1000	2000	400	EMOX-102004PRX
1200	1800	400	EMOX-121804PRX
1200	1800	500	EMOX-121805PRX
1200	2000	400	EMOX-122004PRX

Available on request:

- Versions IP > 55
- Nema 4X

Ideal solutions for indoor and outdoor applications where it is required a high degree of hygiene and/or resistance to chemical agents and weather conditions. Solutions in AISI316L stainless steel available upon request (please add suffix H to the code).





e comp e cor

STAINLESS STEEL STAINLESS STEEL



E COMP SOLUTIONS

- For free-standing or wall-mounted applications
- Supply includes mounting plate
- Protection rating: IP55, Nema 12, IK10.

E COMP STAINLESS STEEL COMPACT ENCLOSURES

W	H	D	E COMP CODE
600	1200	400	ECOMP6-1240X
600	1400	300	ECOMP6-1430X
600	1400	400	ECOMP6-1440X
800	1200	400	ECOMP8-1240X
800	1400	300	ECOMP8-1430X
800	1400	400	ECOMP8-1440X



E COR WALL-MOUNTING BOXES

- Available with blank or plexi door
- Supply includes mounting plate
- Protection rating: IP66, Nema 4X (single door) – Nema 12 (double or plexi door), IK10.

STAINLESS STEEL BOXES

W	H	D	CODE
200	300	150	ECOR2-315X *
300	300	150	ECOR3-315X *
300	400	150	ECOR3-415X *
300	400	200	ECOR3-420X *
400	300	150	ECOR4-315X *
400	400	200	ECOR4-420X *
400	400	250	ECOR4-425X *
400	500	200	ECOR4-520X *
400	600	200	ECOR4-620X *
400	600	250	ECOR4-625X *
500	500	200	ECOR5-520X *
500	500	250	ECOR5-525X *
500	700	200	ECOR5-720X *
500	700	250	ECOR5-725X *
600	400	200	ECOR6-420X *
600	600	200	ECOR6-620X *
600	600	250	ECOR6-625X *
600	600	300	ECOR6-630X *
600	800	200	ECOR6-820X *
600	800	250	ECOR6-825X *
600	800	300	ECOR6-830X *
600	1200	300	ECOR6-1230X *
800	800	300	ECOR8-830X *
800	1000	300	ECOR8-1030X *
800	1200	300	ECOR8-1230X *
1000	1000	300	ECOR10-1030X **
1000	1200	300	ECOR10-1230X **

* EEX version available, ex. ECOR2-315EEX
 ** Boxes provided with double door and rod system



ECOR-TX ENCLOSURES WITH SLOPED ROOF

- Supply includes mounting plate
- Protection rating: IP66, Nema 4X, IK10.

STAINLESS STEEL BOXES WITH SLOPED ROOF

W	H	D	CODE
400	500	150	ECOR4-515TX
400	600	200	ECOR4-620TX
500	700	300	ECOR5-730TX
600	800	250	ECOR6-825TX
800	1000	250	ECOR8-1025TX
800	1000	300	ECOR8-1030TX
800	1200	300	ECOR8-1230TX

ECOR-EEX WALL-MOUNTING BOXES COMPLYING WITH ATEX



- To be used in the atmospheres that are potentially explosive (ATEX) due to inflammable substances such as gas, steam, fume or dust
- Protection rating: IP66, Nema 4, IK10
- Classification:
 - Ex II 2G – Ex e IIC Gb
 - Ex II 2D – Ex tb IIIC Db



e GRAN

STAINLESS STEEL



E GRAN TERMINAL BOXES

- Mounting plate to be ordered separately
- Protection rating: IP66 - IP69K, Nema 4X, IK10.

STAINLESS STEEL TERMINAL BOXES			
W	H	D	CODE
150	150	80	EGRAN1-108X
200	200	80	EGRAN2-208X
300	200	80	EGRAN3-208X
150	150	120	EGRAN1-112X
400	200	120	EGRAN4-212X
300	300	120	EGRAN3-312X

SHX



SHX PUSHBUTTON BOXES

- Supplied with blank cover or punched cover with holes for buttons Ø 22,5mm
- Mounting plate to be ordered separately
- Protection rating: IP66 - IP69K, Nema 4X, IK10

ZBX



ZBX MODULAR CONTROL DESK

- Mounting plate included
- Protection rating: IP55, Nema 12.

STAINLESS STEEL CONTROL DESKS			
W	H	D	CODE
600	1000	400	ZBX6-01
800	1000	400	ZBX8-01
1000	1000	400	ZBX0-01
1200	1000	400	ZBX2-01

CONTROL DESKS DEPTH 400

- Case AEX, shelf LEX/MEX, rise PEX
- Supply includes mounting plate
- Protection rating: IP55, Nema 12, IK10 (for MEX and AEX).

PUSHBUTTON WITH PUNCHED LID						
DIMENSIONS			BLANK COVER CODE	HOLES Ø 22,5		PUNCHED COV. CODE
W	H	D		C	N	
100	100	90	SHX1-109C	-	1	SHX1-109F
100	160	90	SHX1-169C	60	2	SHX1-169F
100	220	90	SHX1-229C	60	3	SHX1-229F
100	280	90	SHX1-289C	60	4	SHX1-289F

e RAM

STAINLESS STEEL



E RAM SUSPENSION ARM SYSTEM

Suspension arm system for operator interface housings made entirely from stainless steel material: a new series of beautifully designed operator panel housings and modular suspension arm systems for industrial applications.

- Articulated single-piece support profiles in four versions (I, J, L, S)
- A wide range of fixed/swivel joints, base attachments and mounting brackets manufactured from AISI303 or AISI304L material, all of which can be easily assembled by the end user and interchangeable to allow the full customization of the application.
- Operator housing made from AISI304L satin stainless steel (AISI316L on request), supplied with solid hinged lid, panel stopper and screwed at the top for easy maintenance. Touch panel mounting on the back of the housing or on the panel
- Available in standard or custom sizes
- Protection rating (enclosure): IP66/IP69K, Nema 4X, IK10.



e VIS MILD STEEL
AL



Thanks to its specific structural concept and its high-resistant materials and finishing, the E VIS range of solutions for outdoor applications ensures a perfect protection of your equipments from all environmental factors, extreme temperatures, harsh environments, atmospheric, mechanical and chemical agents.

- Monobloc cabinet with completely welded structure, removable roof and rain canopy with ventilation louvers
- Mounting plate to be ordered separately
- Protection rating: IP56 (single door) - IP55 (double door), IK10
- Paint finish
Mild steel version:
Double layer of special powder coating: epoxypolyester resin primer and second polyester layer with anti-corrosion pigments.
Aluminium alloy version:
Special painting process with a single polyester powder coating with zinc base.
- Natural airflow & Thermal management.

[EVIS][06 08 04][SM]

1 2 3

- SM E VIS simple-walled cabinet manufactured from mild steel
- DM E VIS twin-walled cabinet manufactured from mild steel
- SA E VIS simple-walled cabinet manufactured from aluminium alloy
- DA E VIS twin-walled cabinet manufactured from aluminium alloy.

EVZE PLINTH

n. 2 side crosspieces with integrated corners
+ n. 2 front / rear blank crosspieces

[EVZE-][T0400]

1 2

[EVZE-][T0600]

1 2

Suffixes to be added for each version:

- V = front/rear ventilation crosspieces
- D = plinth H 200mm
- M = version in mild steel
- A = version in aluminium alloy

OUTDOOR CABINETS

W	H	D
600	800	400
600	1200	400
600	1200	500
600	1400	400
800	800	400
800	1200	400
800	1200	500
800	1400	400
1200	800	400
1200	1200	400
1200	1200	500
1200	1400	400

Available on request:

- Special dimensions
- Special insulation
- Different finishes

e NUX EMC



ETA cabinets are not subjected to EMC Directive because they are not sources of electromagnetic waves, but they can be used as a barrier for the electromagnetic waves generated by the internal or external source.

The EMC version of E NUX cabinet, thanks to its technical features, has been tested complying with the standard EN 61000-5-7 and is able to shield the intensity of the electromagnetic field in both its electrical and magnetic component (high protection), thus offering a suitable solution to obtain a final application complying with the Directive.

- Protection rating: Nema 1 complying with UL508, UL50.

EMC CABINETS

W	H	D	CODE
600	2000	600	ENUX062006PRZ
800	2000	600	ENUX082006PRZ
600	2000	800	ENUX062008PRZ
800	2000	800	ENUX082008PRZ

* Further dimensions available on request.

** For plexi door version, it is available on request a window manufactured from polycarbonate or methacrylate, with the internal part manufactured from a wire mesh that allows the vision of the internal instrumentation without altering significantly the offered shielding values.





A COMPLETE SYSTEM FOR ENCLOSURE SOLUTIONS



SUSPENSION ARM SYSTEM FOR OPERATOR INTERFACE PANELS

Bioniq is the suspension arm and Control Panel system created to combine design and technology. Conceived as a veritable system, Bioniq is made of aluminium alloy and exploits its modular character on three dimensional axis.

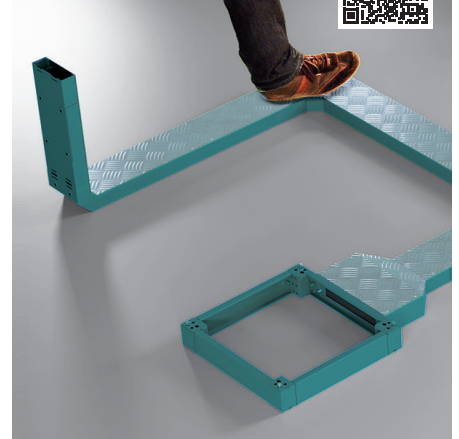
- Container for operator panel BQC/ BQLC, container for keyboard BQK/BQLK customisable for width, height and depth based on the man-machine interface to be inserted
- BQPA suspension system, to be assembled according to the type of installation (protruding from the ceiling, the wall, or in the pulpit version)
- Wide range of accessories available
- Protection rating: Nema 1 complying with UL508, UL50.



THERMAL MANAGEMENT

The electronic parts contained in the control board request suitable expedients regarding dusts, polluting agents and high temperatures.

A correct thermal management of control panels preserves the perfect functioning of the installed equipment, thus optimizing cost and time. To this end, ETA offers Ethermo - the complete range of items for the thermal management of control panels able to meet any requirement: compact as well as ultra-thin air-conditioners (topmounting or wall-mounting applications), outdoor aircon units, air-air/air-water heat exchangers, heaters, control devices, thermostats, "click&fit" fans and filters of top class design.



THE WALK-ON CABLE CONDUIT FOR FLOOR INSTALLATION

E RIVI is a flexible and modular system with sturdy construction and easy assembling: the different lengths of the elements allow creating different combinations, while the wide range of modules and connections ensure to meet different installation requirements.

ETR SUSPENSION SYSTEMS



Three available series (40, 60, 120) of suspension systems, with different loading capacities.

- Wide range of fixed/rotary joints, base attachments and containers, protruding from the wall or the ceiling
- Standard or customisable versions available
- Personalised design with cover in RAL 5020
- Full compatibility with ETA containers.



BUSBAR SYSTEM

Tested busbar system for LV industrial automation, featured by a modular and logical structure.

System tested on ETA cabinet at CESI (certification nr. CESI A4/510927). The results of the test meet the applicable requirements of IEC 61439 - 1/2.



ENERPOWER

ENERPOWER
a unique design
 for three new Electricity Distribution solutions.

eta
your single reference point
 for the energy management, from Power distribution to Industrial & Civil automation.

eta
a single technical support
 for consultancy, design and manufacturing.

1



POWER CENTER

Dedicated to power control and distribution.

2



MOTOR CONTROL CENTER (MCC)

Dedicated to the centralised command and protection of motors.

3



LV BOARDS OF SECONDARY DISTRIBUTION

Dedicated to power distribution in the civil and tertiary sectors.

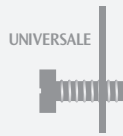
Conformity with IEC 61439 - 1/2 *

Bar distribution system tested on ETA enclosure at CESI (test report CESI A4/510927).

*where applicable



Solutions offered with the new standard treatment E DUP - Double Layer Protection that provides a first layer of epoxy cathodic electrophoresis paint and a second coating with thermosetting epoxy-polyester powders according to the standard ETA electrostatic cycle. (ETA is the first company in its sector to use the electrophoresis process in the coating of enclosures).



Galvanized structure with magnelis coating: eco-friendly with self-healing protection, in order to ensure aesthetic results of exceptional quality. Three-way coupling, patented and marked, to assemble the structure.



All holes threaded M6, for an easy assembly.



Functional unit suitable for forms of segregation up to 4b. Compatibility with the various types of devices produced by the market's leading brands and manufacturers (fixed, removable, extractable).



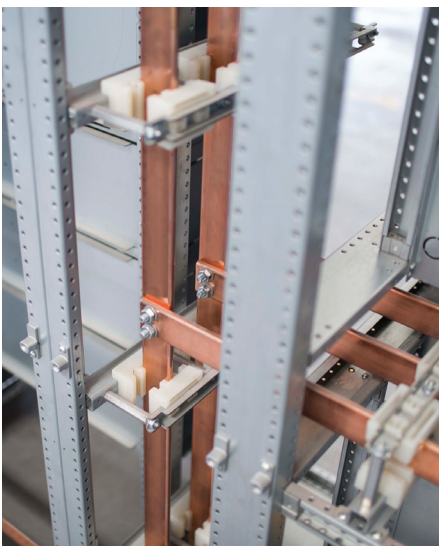
Copper or aluminium rod systems, maximum flexibility when it comes to optionals involving omnibus rods, rod supports, shanks for the cabling of the functional units.

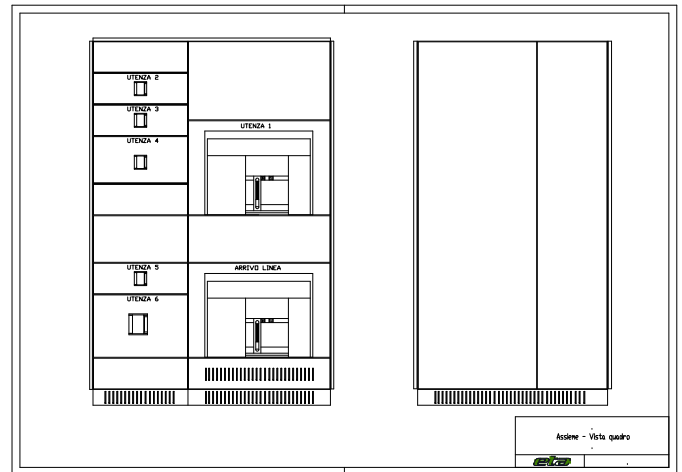
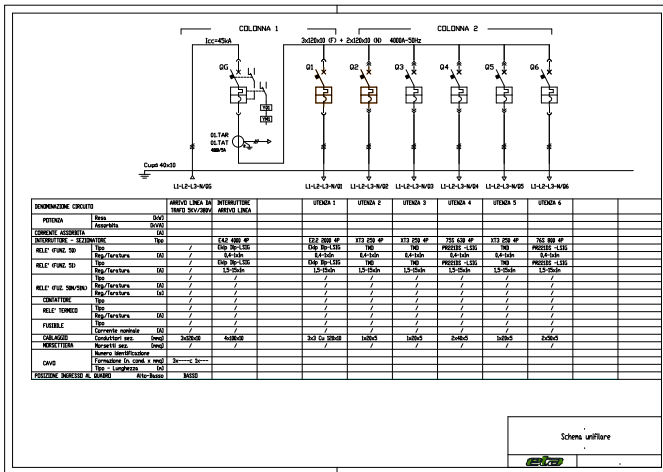
Typical configuration for Power Centres

Typical configuration for distribution boards



Absolutely careful design and construction of all parts.





All the mechanical and electrical skills necessary for complete system development.

Pre-and post-sales support with exceptional service quality.

Power center solutions

W	600 700 800 900 1000 1200
H	2000 (+100 plinth) 2200 (+100 plinth)
D	1000 1200 1400

MCC solutions

W	600 700 800 + cable entry module
H	2000 (+100 plinth) 2200 (+100 plinth)
D	1000 1200 1400

Secondary Distribution solutions

W	600 700 800 900 + cable entry module 200 300 400
H	2000 (+100 plinth) 2200 (+100 plinth)
D	420

- Short circuit resistance testing performed at the prestigious ABB Sace laboratory of Bergamo (Italy). Relative LOVAG certification nr. 175 "Assemblies and Panels - Busbars systems in the ENERPOWER panel".
- Verification of Temperature-rise Limits carried out at the I.N.R.I.M. laboratory of Turin (Italy) with test report nr. 14-0114-01.



	Power Center	MCC	Secondary distribution
Rated frequency	50 Hz		
Rated voltage Ue	400 V or 690 V		
Rated insulation voltage Ui	1000 V		
Rated impulse withstand voltage Uimp	12 kV	12 kV	8 kV
Rated current In	up to 4000 In	up to 1600 In	up to 1600 In
Rated short-time withstand current Icw/1s	up to 100 kA	up to 50 kA	up to 65 kA
Admissible rated peak withstand current Ipk	up to 220 kA	up to 105 kA	up to 143 kA
Forms of segregation	up to 4b	up to 4b	up to 4b
Protection rating	IP 30 (IP 54 with kit)		
Normal operating conditions	Ambient temp. ≤ 40° C - Pollution rating ≤ 3 Installation height < 2000 m		



ABACUS SYSTEM



CABLING RANGE

ABACUS ESSE range consists of solutions with protection rating IP20: designed to offer the best performance even for simplified applications, the product range includes 19" suite cabinets for cabling (available with glazed, blank or ventilated door), server suite cabinets with ventilated or glazed door and 19" wall-mounting boxes.

The cabinets are available in both standard or special combination and supplied already mounted or in flat-pack version.

Protection rating:
IP20 complying with EN60529.
NEMA 1 complying with NEMA 250.



SERVER RANGE

CABLING RANGE WITH GLAZED DOOR

W	H	D	CODE	HE
600	1200	600	AESSE061206PV	24
600	1600	600	AESSE061606PV	33
600	2000	600	AESSE062006PV	42
600	2200	600	AESSE062206PV	47
600	1200	800	AESSE061208PV	24
600	1600	800	AESSE061608PV	33
600	2000	800	AESSE062008PV	42
600	2200	800	AESSE062208PV	47
800	1200	600	AESSE081206PV	24
800	1600	600	AESSE081606PV	33
800	2000	600	AESSE082006PV	42
800	2200	600	AESSE082206PV	47
800	1200	800	AESSE081208PV	24
800	1600	800	AESSE081608PV	33
800	2000	800	AESSE082008PV	42
800	2200	800	AESSE082208PV	47

SERVER RANGE WITH GLAZED DOOR

W	H	D	CODE	HE
600	1200	1000	AESSE061210PVN	24
600	2000	1000	AESSE062010PVN	42
600	2200	1000	AESSE062210PVN	47
600	1200	1200	AESSE061212PVN	24
600	2000	1200	AESSE062012PVN	42
600	2200	1200	AESSE062212PVN	47
800	1200	1000	AESSE081210PVN	24
800	2000	1000	AESSE082010PVN	42
800	2200	1000	AESSE082210PVN	47
800	1200	1200	AESSE081212PVN	24
800	2000	1200	AESSE082012PVN	42
800	2200	1200	AESSE082212PVN	47

SERVER RANGE WITH VENTILATED DOOR

W	H	D	CODE	HE
600	1200	1000	AESSE061210PSN	24
600	2000	1000	AESSE062010PSN	42
600	2200	1000	AESSE062210PSN	47
600	1200	1200	AESSE061212PSN	24
600	2000	1200	AESSE062012PSN	42
600	2200	1200	AESSE062212PSN	47
800	1200	1000	AESSE081210PSN	24
800	2000	1000	AESSE082010PSN	42
800	2200	1000	AESSE082210PSN	47
800	1200	1200	AESSE081212PSN	24
800	2000	1200	AESSE082012PSN	42
800	2200	1200	AESSE082212PSN	47



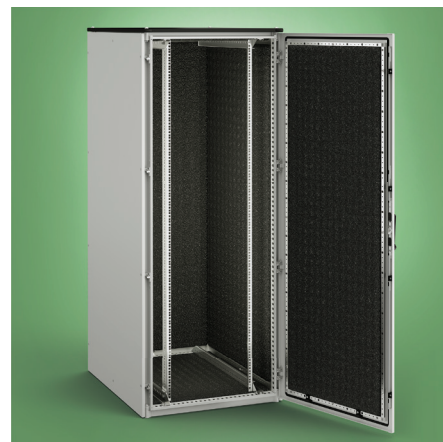
AIR-CONDITIONED OPERATING CABINET

If specific environments or properly air-conditioned data center are not available for your application, the temperature developed from the server installed inside the rack might be so high that a proper cooling is required. So, the air-conditioned operating cabinet is the most proper solution to solve the problems of heat dissipation: the protection rating IP55 of ABACUS PRO guarantees the best working conditions for the air conditioner – available from 400W to 4000W of cooling capacity and in both wall-mounting and roof-mounting versions – thus to ensure the optimal cooling of your servers.



ABACUS PRO SOLUTIONS FOR SPECIAL OUTDOOR APPLICATIONS

- Structure manufactured from high-strength low-alloy sheet steel (HSLA).
- Reversible blank door supplied with double-bar lever-operated locking system.
- Removable roof panel and drip cover.
- Panels manufactured from sheet steel with rounded folding, specifically designed for intrusion protection.
- 19" frontal rails (2pcs).
- Double layer of special powder coating: epoxy polyester resin primer and second polyester layer with anticorrosion pigments.



SOUNDPROOF CABINET

The increasing compression of servers and equipment has led to big problems in heat and noise management, especially if the rack is installed in work environments where even the safety regulations are limiting the acoustic noise level itself. ETA can solve your problem by manufacturing soundproof cabinets based on ABACUS PRO concept – which is already offering a strong protection from noise – and strengthening it with a proper soundproofing kit. If needed, the rack system installed in the cabinet can be also ventilated or cooled by using specific low-noise fans.



BOX IP 66 FOR SAFETY AND VIDEO SURVEILLANCE



ABACUS PRO OUTDOOR BOX



ABACUS ESSE BOX

W	H	D	CODE	BLANK	DRILLED
300	400	200	ST3420	ST3420C	ST3420A
400	500	250	ST4525	ST4525C	ST4525A
400	600	250	ST4625	ST4625C	ST4625A
600	600	300	ST6630	ST6630C	ST6630A
600	400	300	ST6430	ST6430C	ST6430A



MULTIPLIESTHEEXPERIENCE



**INDUSTRIAL
AUTOMATION**



**HARSH
ENVIRONMENTS**



**LV ENERGY
DISTRIBUTION**



**IT
BUSINESS**

E.T.A. S.P.A.
22035 Canzo - Como (Italy)
Via Monte Barzaghino, 6
t. +39 031.673.611
f. +39 031.670.525
infosede@eta.it
www.eta.it

E.T.A. ENCLOSURES (UK) LIMITED
Unit 2, Ignite, Magna Way
Rotherham, South Yorkshire, S60 1FD
t. +44 01709 386630
f. +44 01709 369524
info@eta-enclosures.co.uk
www.eta-enclosures.co.uk

SASU E.T.A. France
Rue du Prê aux Boeufs
76806 St Etienne du Rouvray
t. +33 02 35643470
f. +33 02 35642275
info@etafrance.fr
www.etafrance.fr

ETA ENCLOSURES Sp. z o.o.
Sikorskiego 44,
62-300 Września (Polonia)
biuro@eta-enclosures.it
www.eta-enclosures.it

E.T.A. SPB
Shpalernaya ul. 54
191015 St.Petersburg (Russia)
www.eta.it