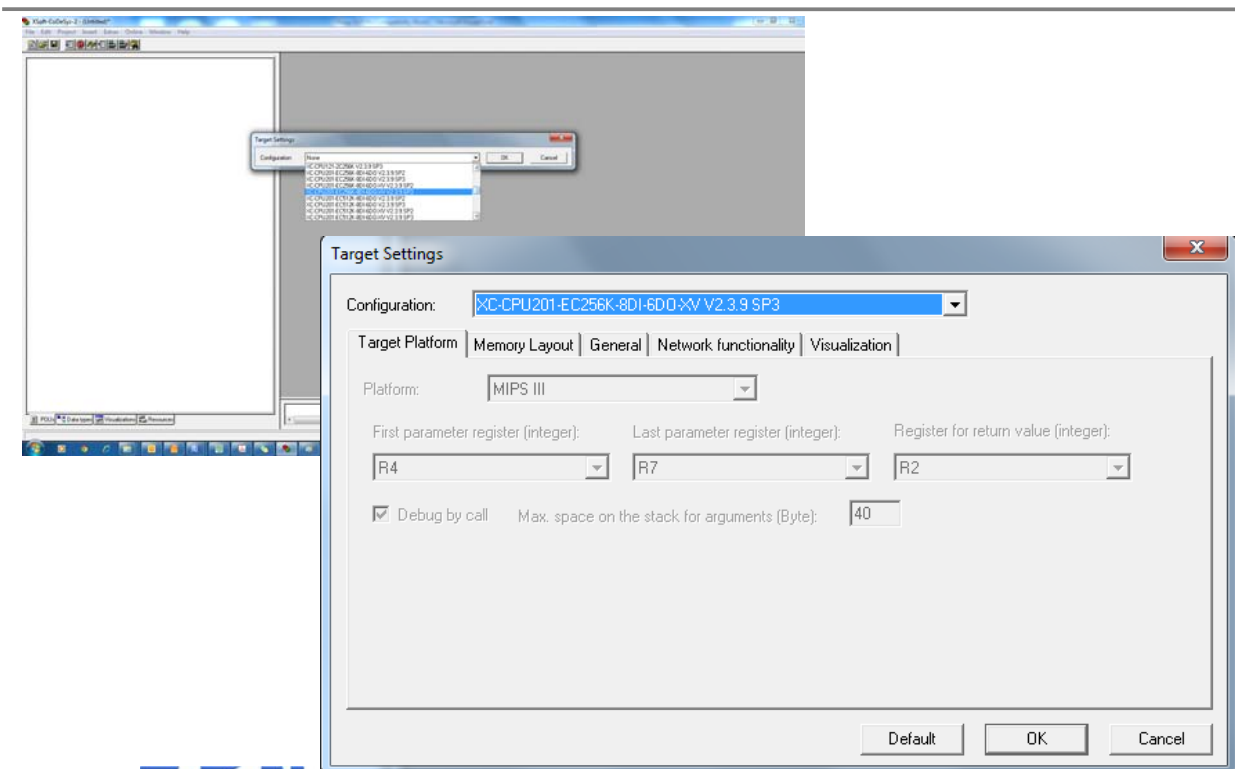


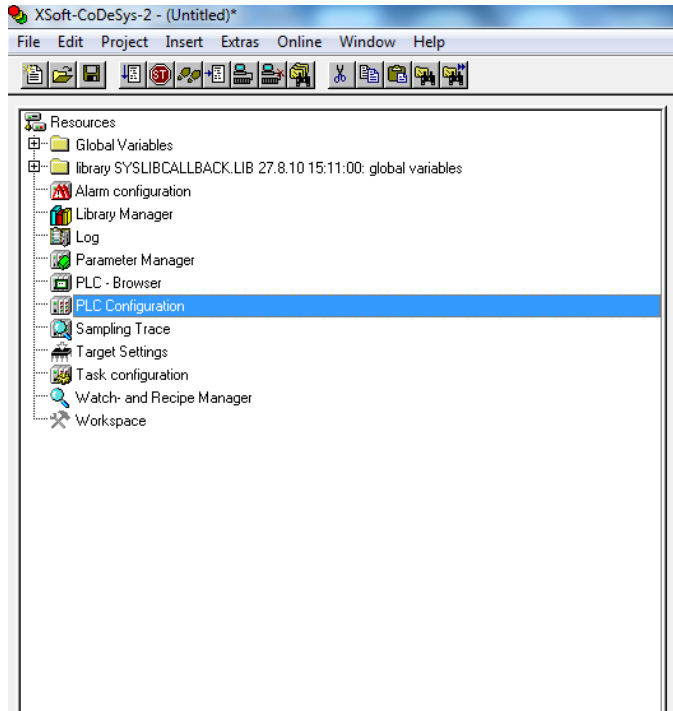


Организация связи между контроллером и системой SmartWire-DT Вариант 1

Шаг 1. Выбор контроллера

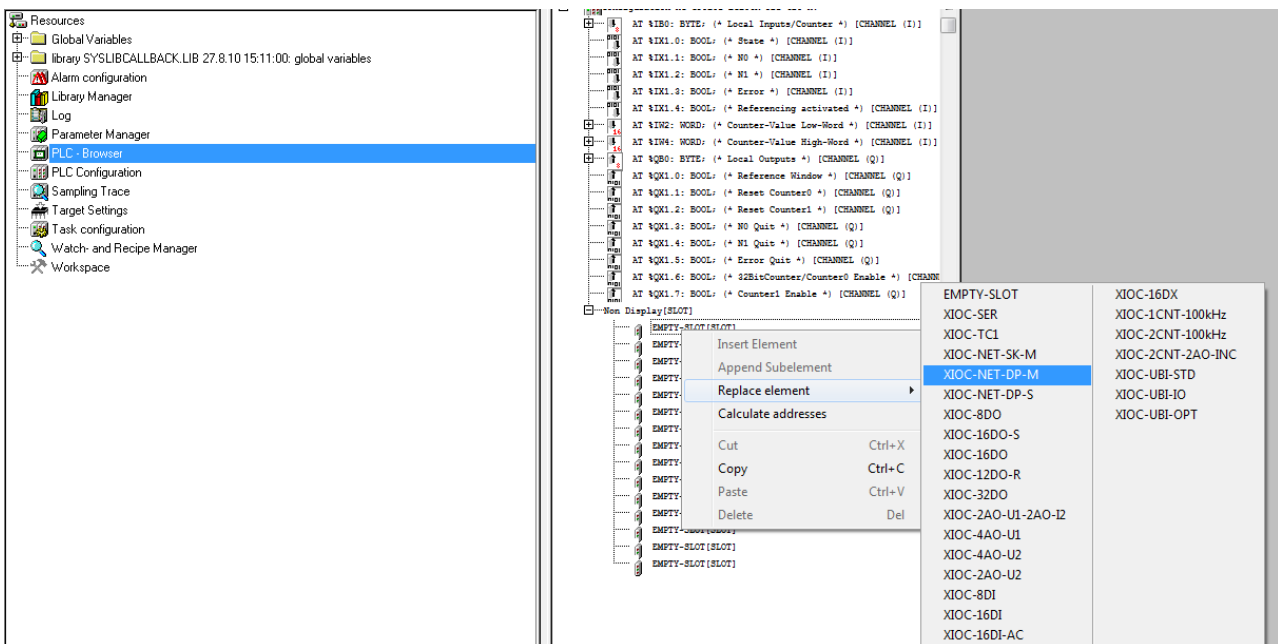


Шаг 2. Конфигурирование контроллера



© 2011 Eaton Corporation. All rights reserved

Шаг 3. Выбор коммуникационного модуля



© 2011 Eaton Corporation. All rights reserved

Шаг 4. Выбор шлюза

Target Settings
Task configuration
Watch- and Recipe Manager

CM4-504-GS1 (KMCM4D01.GSD)...
DP-Slave PDP-TP (Mpd4d03.gsd)...
EASY204-DP (Moe4d10.gsd)...
EASY204-DP V 5.50 (Moe4d10.gsd)...
EASY204-DP V 5.50 (Moe4d10.gsf)...
EASY204-DP V 5.50 (Moe4d10.gsg)...
EM4-204-DX1 (KM_4D00.GSD)...
EUSC-SWD-DP (Int) (Moe4d13.gsd)...
EUSC-SWD-DP V1 (Int) (Moe4d14.gsd)...
LE4-504-BT1 (MSLE4D0B.GSD)...
PS416-NET-441 (MS404D17.GSD)...
SWIRE-GW-DP (Moe4d12.gsd)...
WB-16DI-P/16DO/0.5A-PK-ECO (WIWB022A.GSD)...
WB-16DI/P-ECO (WIWB0221.GSD)...
WB-16DI/P/-2X8 (WIWB0251.GSD)...
WB-16DO (WIWB0258.GSD)...
WB-16DO/0.5A-PK-ECO (WIWB0228.GSD)...
WB-1CNT/24V (WIWB0270.GSD)...
WB-24DI/8DO/0.5A-PK (WIWB0257.GSD)...
WB-32DI-P-2X16 (WIWB0253.GSD)...
WB-32DI/P-ECO (WIWB0223.GSD)...
WB-32DO/0.5A-P-2X16 (WIWB025F.GSD)...
WB-32DO/0.5A-PK-ECO (WIWB022F.GSD)...
WB-3AI/1AO-UI (WIWB0268.GSD)...
WB-4AI/PT100 (WIWB0266.GSD)...
WB-4AI/THERMO (WIWB026A.GSD)...
WB-4AI/UI (WIWB0264.GSD)...
WB-4AO/UI (WIWB0262.GSD)...
WB-4DO/8DO (WIWB0254.GSD)...
WB-8AO/U (WIWB026C.GSD)...

WB-8DI/8DO (WIWB0255.GSD)...
WB-8DI/P (WIWB0250.GSD)...
XIOC-NET-DP-S (Moe4d19.gsd)...
XN-GW-PBDP-1.5MB (XN02B2E.gsd)...
XN-GW-PBDP-1.5MB (XN02B2EV24.gsd)...
XN-GW-PBDP-1.5MB (XN02B2EV25.gsd)...
XN-GW-PBDP-1.5MB (XN02B2EV30.gsd)...
XN-GW-PBDP-1.5MB (XN02B2EV32.gsd)...
XN-GW-PBDP-1.5MB (XN02B2EV35.gsd)...
XN-GW-PBDP-1.5MB (XN02B2SV24.gsd)...
XN-GW-PBDP-1.5MB (XN02B2SV25.gsd)...
XN-GW-PBDP-1.5MB (XN02B2SV30.gsd)...
XN-GW-PBDP-1.5MB (XN02B2SV32.gsd)...
XN-GW-PBDP-1.5MB (XN02B2SV35.gsd)...
XN-GW-PBDP-12MB (XN02B3E.gsd)...
XN-GW-PBDP-12MB (XN02B3EV24.gsd)...
XN-GW-PBDP-12MB (XN02B3EV25.gsd)...
XN-GW-PBDP-12MB (XN02B3EV30.gsd)...
XN-GW-PBDP-12MB (XN02B3EV32.gsd)...
XN-GW-PBDP-12MB (XN02B3EV35.gsd)...
XN-GW-PBDP-12MB (XN02B3SV24.gsd)...
XN-GW-PBDP-12MB (XN02B3SV25.gsd)...
XN-GW-PBDP-12MB (XN02B3SV30.gsd)...
XN-GW-PBDP-12MB (XN02B3SV32.gsd)...
XN-GW-PBDP-12MB (XN02B3SV35.gsd)...
XN-GW-PBDP-12MB-STD (XN02B5.gsd)...
XN-GWBR-PBDP (XN02B6E.gsd)...
XN-GWBR-PBDP (XN02B6EV26.gsd)...
XN-GWBR-PBDP (XN02B6EV30.gsd)...
XN-GWBR-PBDP (XN02B6EV32.gsd)...

XN-GWBR-PBDP (XN02B6EV35.gsd)...
XN-GWBR-PBDP (XN02B6S.gsd)...
XN-GWBR-PBDP (XN02B6SV30.gsd)...
XN-GWBR-PBDP (XN02B6SV32.gsd)...
XN-GWBR-PBDP (XN02B6SV35.gsd)...
XNE-GWBR-PBDP (MIAG02B7V40.gsd)...
XNE-GWBR-PBDP (MIAG02B7V451.gsd)...
ZB4-504-IF1 (KMZB4D02.GSD)...
ZB4-604-IF1 (KMZB4D03.GSD)...

Ctrl+X
Ctrl+C
Ctrl+V
Del



Powering Business Worldwide

© 2011 Eaton Corporation. All rights reserved

Шаг 4. Выбор компонентов SWD

Configuration XC-CPU201-EC256K-8DI-6DO-KV

AT %I1.0: BYTE: (* Local Inputs/Counter *) [CHANNEL (I)]
AT %I1.1: BOOL: (* State *) [CHANNEL (I)]
AT %I1.2: BOOL: (* N1 *) [CHANNEL (I)]
AT %I1.3: BOOL: (* Error *) [CHANNEL (I)]
AT %I1.4: BOOL: (* Referencing activated *) [CHANNEL (I)]
AT %I1.5: WORD: (* Counter-Value Low-Word *) [CHANNEL (I)]
AT %I1.6: WORD: (* Counter-Value High-Word *) [CHANNEL (I)]
AT %Q0: BYTE: (* Local Outputs *) [CHANNEL (Q)]
AT %Q1.0: BOOL: (* Reference Window *) [CHANNEL (Q)]
AT %Q1.1: BOOL: (* Reset Counter0 *) [CHANNEL (Q)]
AT %Q1.2: BOOL: (* Reset Counter1 *) [CHANNEL (Q)]
AT %Q1.3: BOOL: (* NO Quit *) [CHANNEL (Q)]
AT %Q1.4: BOOL: (* N1 Quit *) [CHANNEL (Q)]
AT %Q1.5: BOOL: (* Error Quit *) [CHANNEL (Q)]
AT %Q1.6: BOOL: (* 32BitCounter/Counter0 Enable *) [CHANNEL (Q)]
AT %Q1.7: BOOL: (* Counter1 Enable *) [CHANNEL (Q)]

Non Display (SLOT)

XIOC-NET-DP-M [SLOT]
EUSC-SWD-DP V1 (Int) [VAR]
EMPTY-SLOT [SLOT]
EMPTY-SLOT [SLOT]
EMPTY-SLOT [SLOT]
EMPTY-SLOT [SLOT]
EMPTY-SLOT [SLOT]
EMPTY-SLOT [SLOT]
EMPTY-SLOT [SLOT]
EMPTY-SLOT [SLOT]
EMPTY-SLOT [SLOT]
EMPTY-SLOT [SLOT]
EMPTY-SLOT [SLOT]
EMPTY-SLOT [SLOT]
EMPTY-SLOT [SLOT]
EMPTY-SLOT [SLOT]
EMPTY-SLOT [SLOT]

Base parameters | DP parameters | **Input/Output** | User parameters | Groups

Max. length of input data: 240 Byte Length of input data: 10 Byte
Max. length of output data: 240 Byte Length of output data: 8 Byte
Max. length of in-/output data: 480 Byte Length of in-/output data: 18 Byte
Max. number of modules: 58 Number of modules: 9

M22-SWD-KC11 (Moeller)
M22-SWD-K22 (Moeller)
M22-SWD-KC22 (Moeller)

In-/Output Modules

DIL-SWD-32-001 (Moeller)
DIL-SWD-32-002 (Moeller)
EUSC-SWD-4D4D (Moeller)
EUSC-SWD-4D2R (Moeller)
M22-SWD-LED-W (Moeller)
M22-SWD-LED-C-W (Moeller)
M22-SWD-K11LED-W (Moeller)
M22-SWD-K11LED-C-W (Moeller)
M22-SWD-K22LED-W (Moeller)
M22-SWD-K22LED-C-W (Moeller)
M22-SWD-LED-G (Moeller)
M22-SWD-LED-C-G (Moeller)
M22-SWD-K11LED-G (Moeller)
M22-SWD-K11LED-C-G (Moeller)
M22-SWD-K22LED-G (Moeller)
M22-SWD-K22LED-C-G (Moeller)

Selected Modules

PKE-SWD-32 Profile 1 (Moeller)
DIL-SWD-32-001 (Moeller)
DIL-SWD-32-002 (Moeller)
M22-SWD-LED-F (Moeller)
M22-SWD-K22LED-W (Moeller)
M22-SWD-K22LED-G (Moeller)
M22-SWD-K11LED-C-W (Moeller)
M22-SWD-KC11 (Moeller)
M22-SWD-K11LED-C-W (Moeller)

Select >>
<< Delete
Properties



Powering Business Worldwide

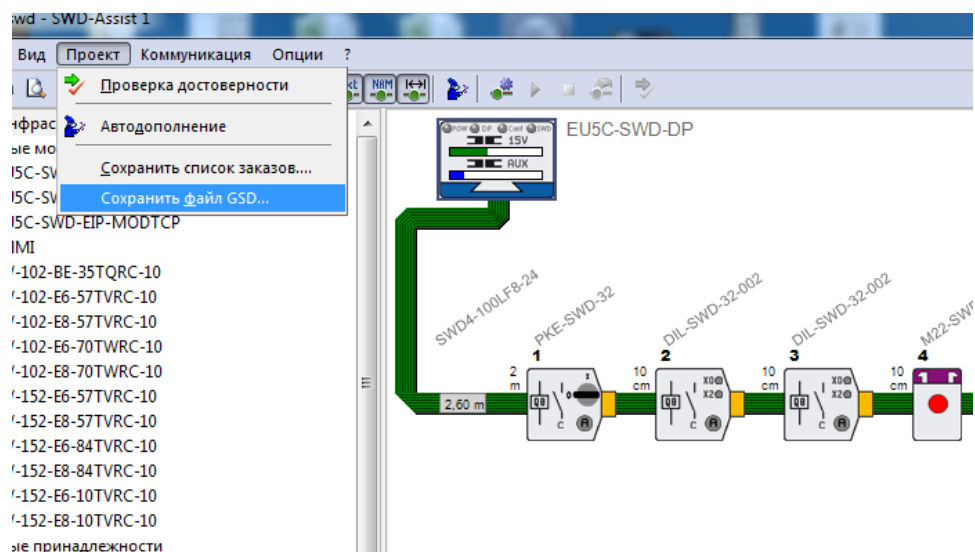
© 2011 Eaton Corporation. All rights reserved

Организация связи между контроллером и системой SmartWire-DT Вариант 2



© 2011 Eaton Corporation. All rights reserved

Шаг 1. Генерация GSD-файла



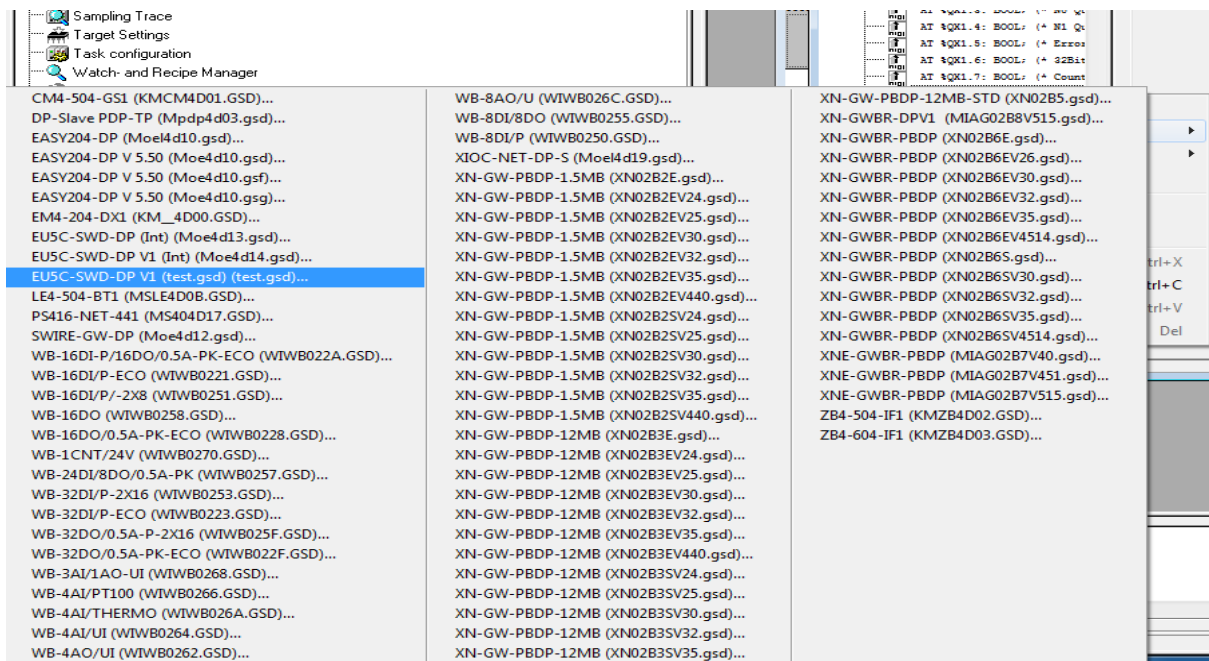
Сохраняем GSD- файл в деректории:

C:\Program Files (x86)\Common Files\CAA-Targets\Eaton Automation\V2.3.9 SP3\PLCCConf

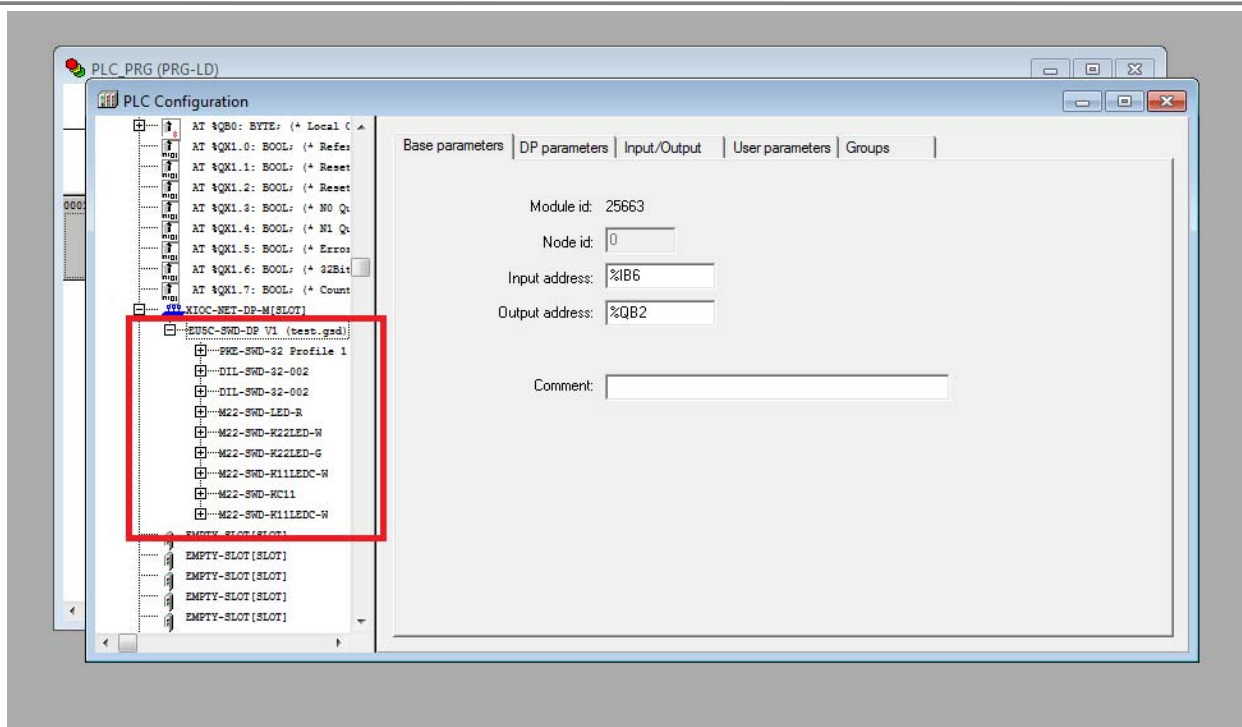


© 2011 Eaton Corporation. All rights reserved

Шаг 2. Выбор GSD-файла из списка



Шаг 3. Компоненты SWD



EATON

Powering Business Worldwide